

S.
14.GS
Geo 2
C. 2

ILLINOIS GEOLOGICAL
SURVEY LIBRARY.

ILLINOIS STATE GEOLOGICAL SURVEY
Urbana, Illinois 61801

GEOGRAM 2
October 1974

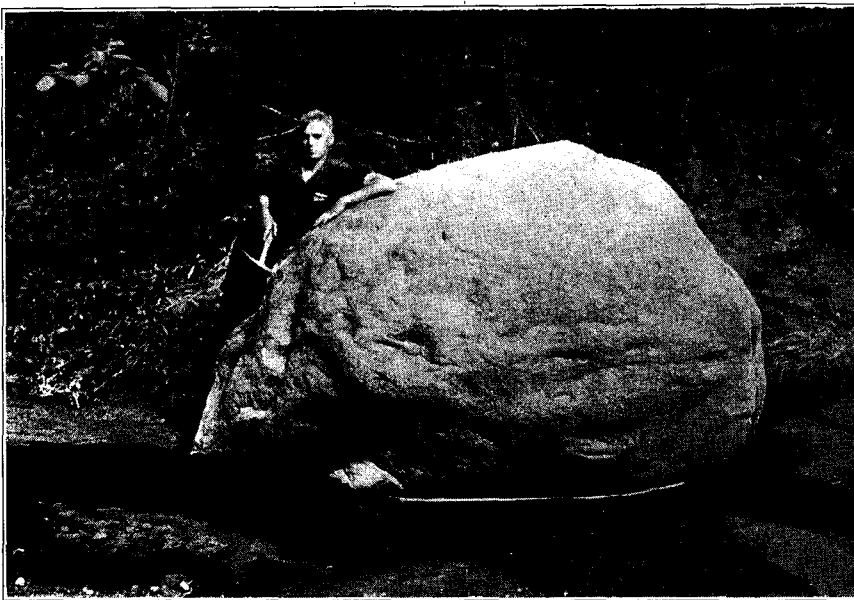
ERRATICS ARE ERRATIC

Myrna M. Killey

You may have seen them scattered here and there in Illinois—boulders, some large, some small, lying alone or with a few companions in the corner of a field, at the edge of a road, in someone's yard, or perhaps on a courthouse lawn or schoolyard. Many of them seem out of place, like rough, alien monuments in the stoneless, grassy knolls and prairies of our state. Some—the colorful and glittering granites, banded gneisses, and other intricately veined and streaked igneous and metamorphic rocks—are indeed foreign rocks, for they came from Canada and the states north of us. Others—gray and tan sedimentary rocks—are native rocks and may be no more than a few miles from their place of origin. All of these rocks are glacial boulders that were moved to their present sites by massive ice sheets that flowed across our state. If these boulders are unlike the rocks in the quarries and outcrops in the region where they are found, they are called erratics.

The continental glaciers of the Great Ice Age scoured and scraped the land surface as they advanced, pushing up chunks of bedrock and grinding them against each other or along the ground surface as the rock-laden ice sheets pushed southward. Hundreds of miles of such grinding, even on such hard rocks as granite, eventually rounded off the sharp edges of these passengers in the ice until they became the rounded, irregular boulders we see today. Although we do not know the precise manner in which erratics reached their present isolated sites, many were

probably dropped directly from the melting front of a glacier. Others may have been rafted to their present resting places by icebergs on ancient lakes or on the floodwaters of some long-vanished stream as it poured from a glacier. Still others, buried in the glacial deposits, could have worked their way up to the land surface as the surrounding loose soil repeatedly froze and thawed. When the freezing ground expands, pieces of rock tend to be pushed upward, where they are more easily reached by the farmer's plow and also more likely to be exposed by erosion.



An eight-foot boulder of pink granite left by a glacier in the bed of a creek about 5 miles southwest of Alexis, Warren County, Illinois. (From ISGS Bulletin 57, 1929.)

Generally speaking, erratics found northeast of a line drawn from Freeport in Stephenson County, southward through Peoria, and then southeastward through Shelbyville to Marshall at the east edge of the state were brought in by the last glacier to enter Illinois. This glaciation, called the Wisconsinan, spread southwestward into Illinois from a center in eastern Canada, reaching our state about 75,000 years ago and (after repeated advances and retreats of the ice margin) melting from the state about 12,500 years ago. Erratics to the west or south of the great arc outlined above were brought in by a much older glacier, the Illinoian, which spread over most of the state about 300,000 to 175,000 years ago. Some erratics were brought in by even older glaciers that came from the northwest.

You may be able to locate some erratics in your neighborhood. Sometimes it is possible to tell where the rock originally came from by determining the kind of rock it is. A large boulder of granite, gneiss, or other igneous or metamorphic rock may have come from the Canadian Shield, a vast area in central and eastern Canada where rocks of Precambrian age (more than 600 million years old) are exposed at the surface. Some erratics containing flecks of copper were probably transported here from the "Copper Range" of the upper peninsula of Michigan. Large pieces of copper have been found in glacial deposits of central and northern Illinois. Light gray to white quartzite boulders with beautiful, rounded pebbles of red jasper came from a very small outcrop area near Bruce Mines, Ontario, Canada. Purplish pieces of quartzite, some of them banded, probably originated in the Baraboo Range of central Wisconsin. Most interesting of all are the few large boulders of Canadian tillite. Tillite is lithified (hardened into rock) glacial till deposited by a Precambrian glacier many millions of years older than the ones that invaded our state a mere few thousand years ago. Glacial till is an unsorted and unlayered mixture of clay, sand, gravel, and boulders that vary widely in size and shape. Tillite is a gray to greenish gray rock containing a mixture of grains of different sizes and scattered pebbles of various types and sizes.

Many erratics are of notable size and beauty, and in parts of Illinois they are commonly used in landscaping. Some are used as monuments in courthouse squares, in parks, or along highways. Many are marked with metal plaques to indicate an interesting historical spot or event. Keep an eye out for erratics. There may be some of these glacial strangers in your neighborhood that would be interesting to know.