

# Implementing an EMS - Dotting the "i's;" Crossing the "t's."

---

Ken Barnes  
WMRC  
P2 Program

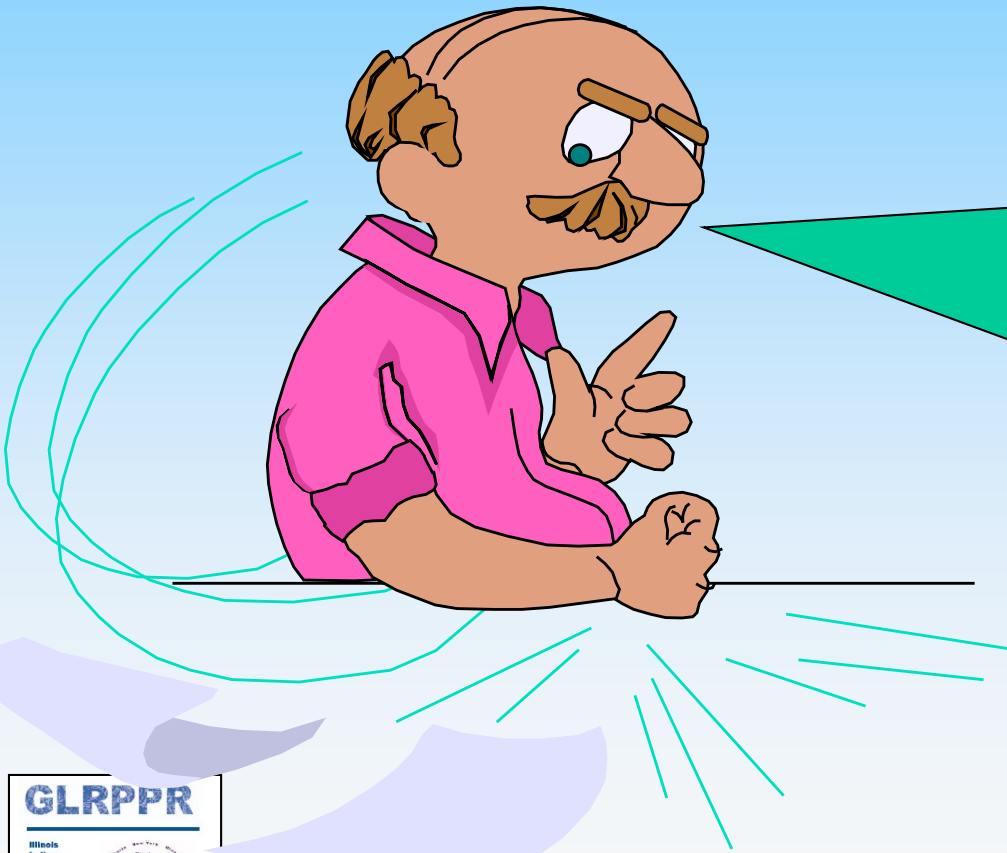
---

GLRPPR  
March 6, 2003





# Big Guy Enterprises



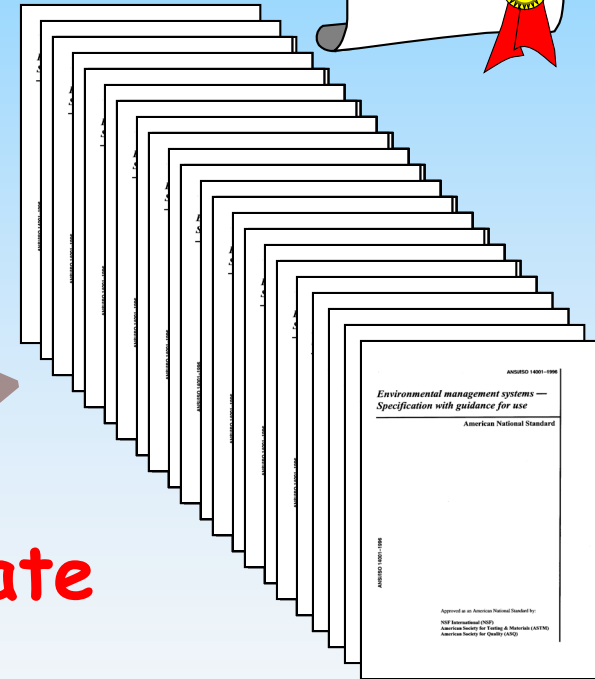
I want an EMS implemented and I want it BEFORE we lose the International account!!!





# O.K. - Here's what we'll do...

- You write the Policy thingy...
- You read the standard - I think it's short?
- You figure out what documents we need.
- You ...oh?!
  - By July 4<sup>th</sup> for the Corporate role out!






# Hardly!


- Do it alone
- Use a consultant
- Use WMRC
  - Full implementation -  
16, 4-hr session, 3-on site
  - Accelerated implementation -  
5, 8-hrs sessions
  - Community College workshops -  
5 sessions
  - Customized to meet your requirements.





I'M PUTTING YOU IN CHARGE OF GETTING ISO 14000 CERTIFICATION.


S. Adams E-mail: SCOTTADAMS@AOL.COM



WHAT'S THE DIFFERENCE BETWEEN THAT AND ISO 9000?

OH, ABOUT 6000. HA HA HA HA!!

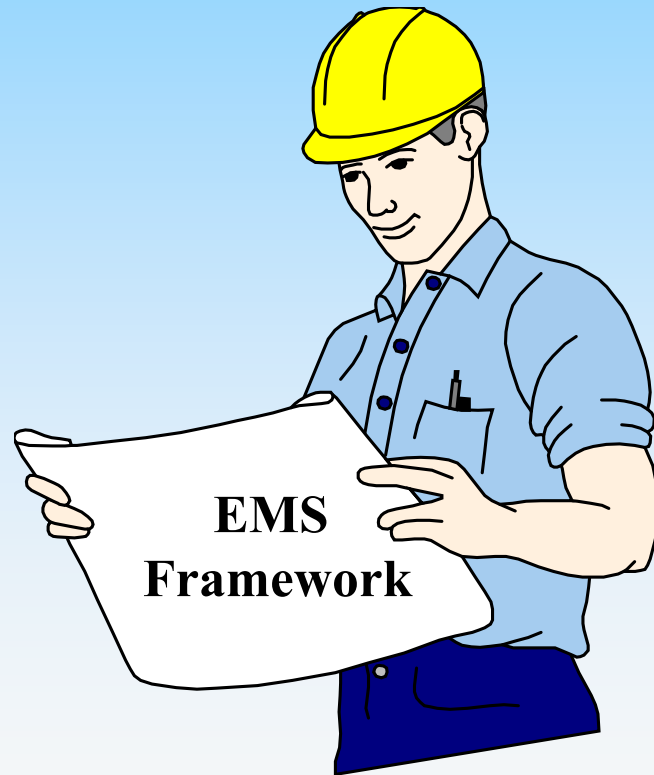
1/24/97 © 1997 United Feature Syndicate, Inc.



HEY, I THINK I'LL USE THAT ONE AT THE STOCKHOLDER MEETING!

YEAH, THAT'LL WAKE THEM UP.

# Designing the EMS





# Team Building

- Ya, Ya! Cross-functional team, I know...

- Should be a "functional" team

- Interest

- No sleeping during training sessions

- Ability

- "You know" "Man"

- Availability

- Midnight shift makes poor day shift trainers

- Commitment

- Understand why an EMS is necessary.



WHINNING





# Responsibilities

- **Environmental Manager**
  - His program- his job!?
- **Responsibility Matrix**
  - Who, what, when, how
- **Implementation "Homework"**
  - Completed to move forward
  - Build upon each other.







# Cracking the Whip

- Environmental Management Representative (EMR)
  - Ensuring EMS is established, implemented and maintained
  - Report on the EMS's performance
    - Management review
    - Improving the EMS.



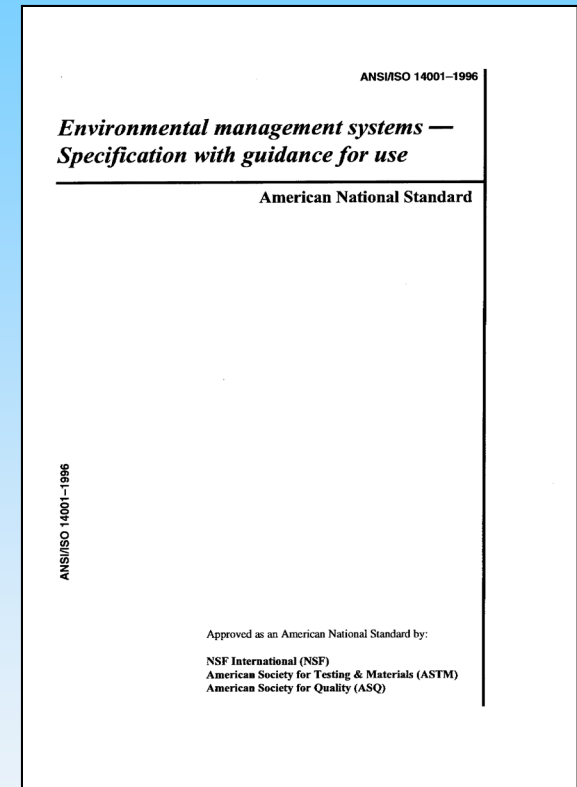
# Implementation





# The ISO 14001 Standard

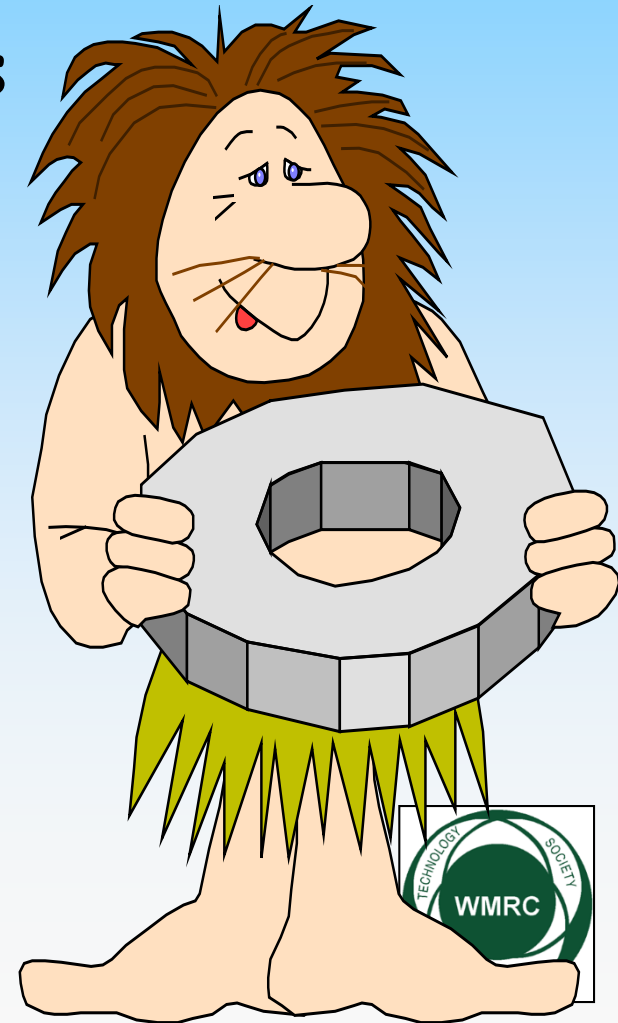
- 3-pages (Really!!)
  - Please **try** to read it!
    - Know what it says
    - Understand what it says
    - Interpret it for your facility
  - The auditor will ask questions based on what is written in the Standard!!





# Initial Environmental Review

- Don't recreate the wheel
  - Have many control processes
    - Use them
    - Modify them
    - Practice them
    - Incorporate them
  - Process Mapping
    - Value added exercise.



# Operating under an EMS





# Communications

- No man or woman is an island -
  - Biggest value identified in an EMS
    - Knowing what each other is doing
    - Knowing why we're doing something
- Believing your communications is good enough for an EMS
  - It's not!



IN ADDITION TO ISO 9000, WE WILL STRIVE TO BE QS-9000 COMPLIANT.



www.dilbert.com scottadams@aol.com

THAT MEANS FALSIFYING THE FOLLOWING DOCUMENTS: QSR, APQP, FMEA, MSA, SPC, PPAP AND QSA.



11/25/99 © 1999 United Feature Syndicate, Inc.

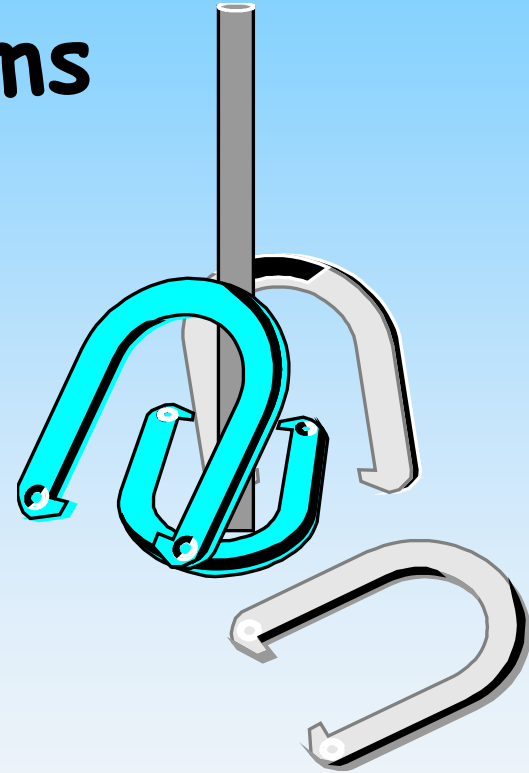
REMEMBER, YOU CAN'T SPELL COMPLIANCE WITHOUT "LIANCE."





# Documentation

- **ISO 9000 Quality Systems**
  - Similar but **NOT** the same
    - Concept is different
    - Training is different
- **Going overboard**
  - Do what's required
  - **EMS** large at first
    - Consolidating as system matures.

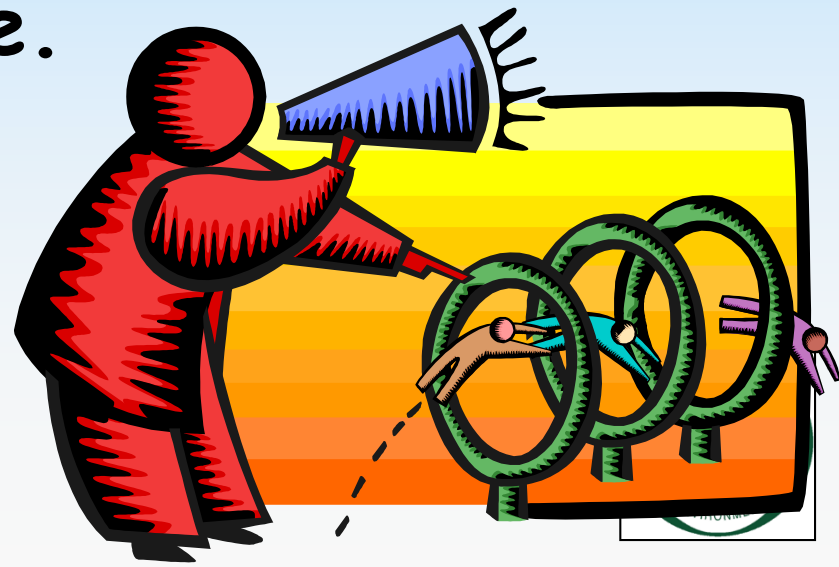




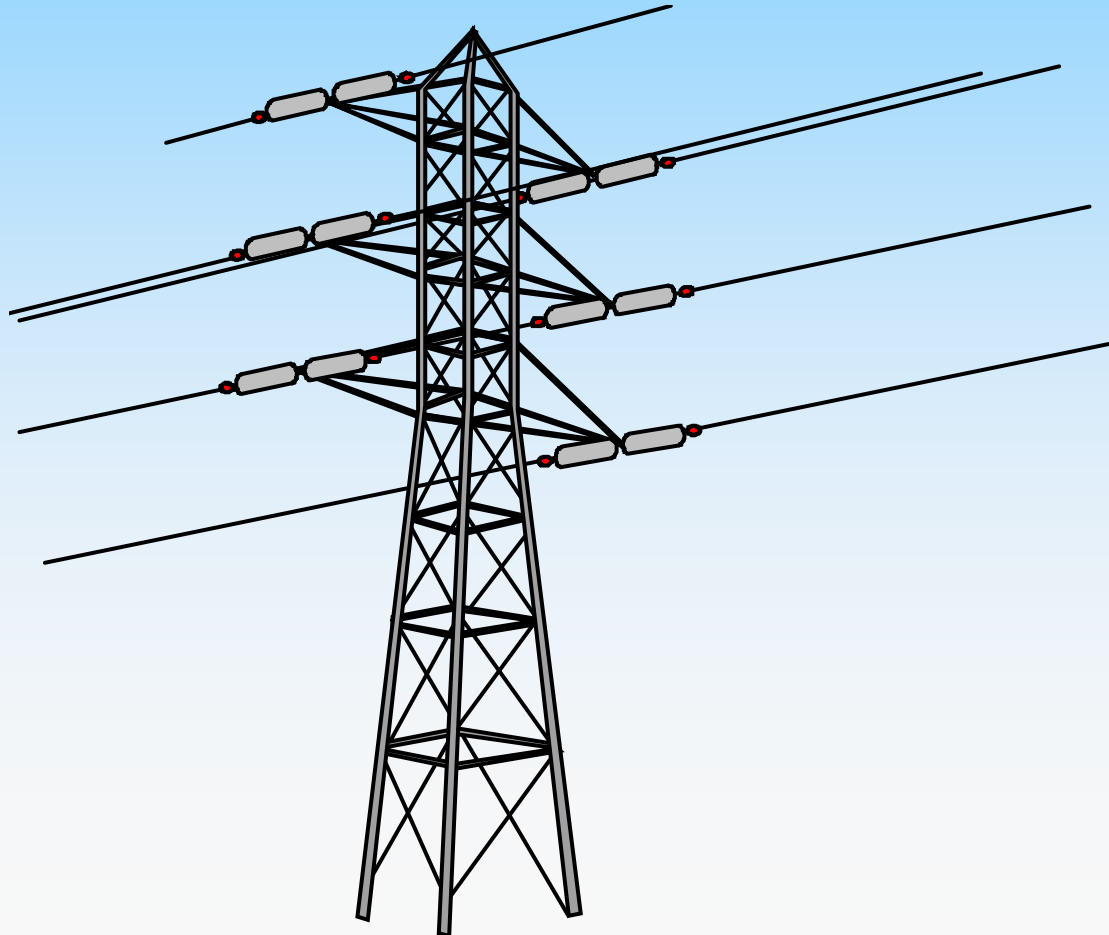


# From Drawing Board to Plant Floor

- **Employee Awareness**
  - **Required!!!!**
    - How the “system” works
    - Buy-in
    - Success or Failure.



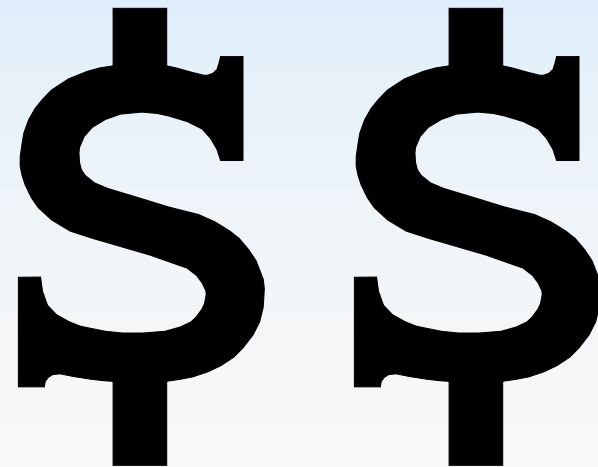
# Realizing EMS Potential





# EMS Potential

- Cost savings in raw material usage
- Energy (reduction) savings
- Process efficiency labor savings
- Increase market shares through international trade.





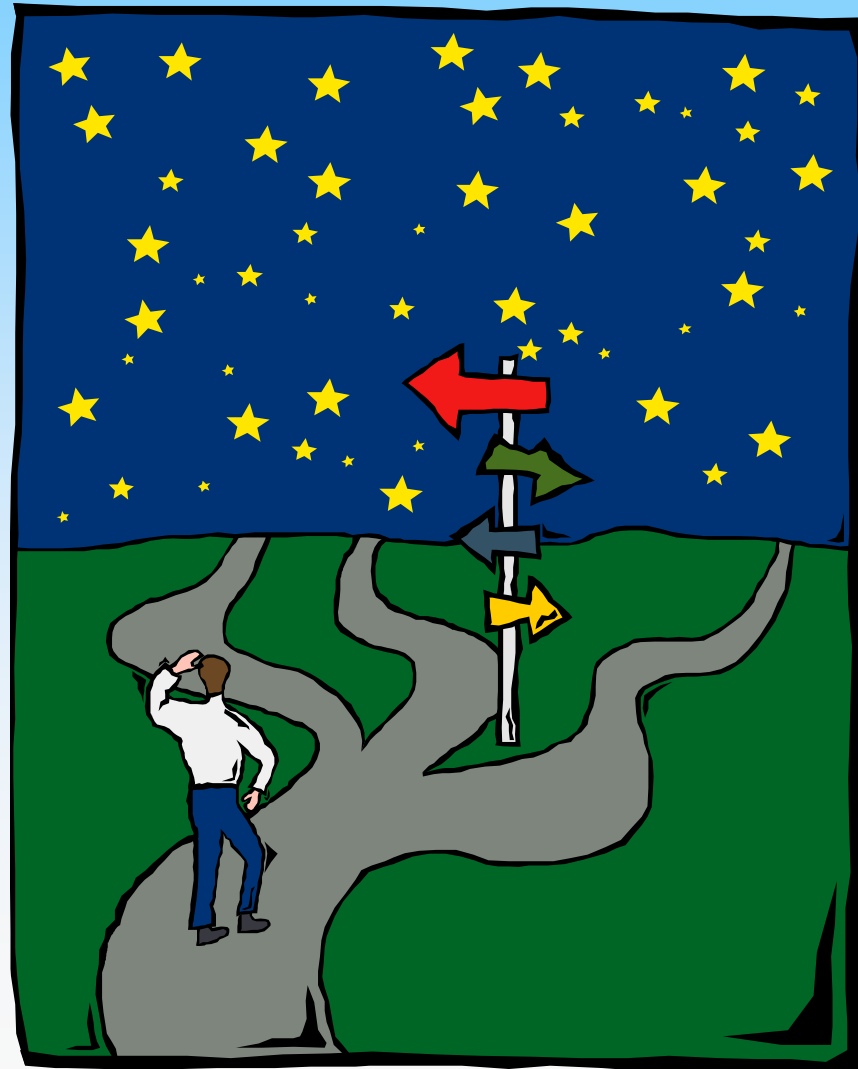
# Potential Savings

- **EMS**

- Communicate better
- Understand your process better
- Have consistent work instructions
- Have resources dedicated to EM
- Have management commitment
- Have a better work place environment.



# The Gauntlet





# 3<sup>rd</sup> Party Registration Audit

- Pre-assessment
- Initial assessment
- Documentation assessment
- And finally ...
  - The registration assessment.





# Gett'in Nervous!

- Every body's moving - but in the same direction?
  - Knowing what to expect through internal auditing
  - Asking the tough, obtuse questions
  - Cards, banners, posters, contests
- Management knows and understands the "Spirit" of the EMS.



A cartoon illustration of a man with a large, black, curled mustache, wearing a black suit jacket, a white shirt, and a pink tie. He has a wide, toothy grin and large, expressive eyes. He is holding a large white sign with a black border. A speech bubble above him contains the text "It's Really Very Simple!".

It's Really Very Simple!

- Say what you will do -
- Do what you said -
- Recognize any differences in what you planned and what you did -
- Act on those differences -
- Ensure action was effective -
- Prove it with documentation.





International  
Organization for  
Standardization

# Questions?

