

# Updates to Autofit: Progress and Prospects

## New features!

- Uses DR information (~10x speedup)
- Improved UI (progress bars!)
- Handles 2f-lineshapes and baselines

Grid Autofit Input File Generation

# of Processors: 8

Temperature (K): 2 Max J value: 10

500 <= A (MHz) <= 5000  Include a-types  Advanced Settings

100 <= B (MHz) <= 3000  Include b-types

100 <= C (MHz) <= 3000  Include c-types

Data File Name: [ ] Browse Data Load Data Plot Data

[ ] <= Peak Height <= [ ]

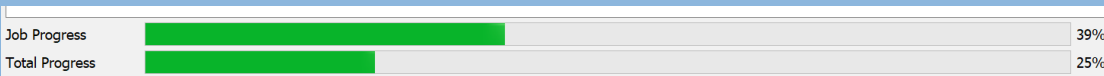
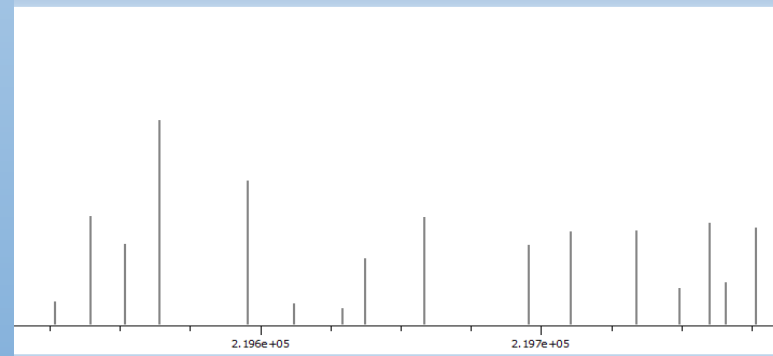
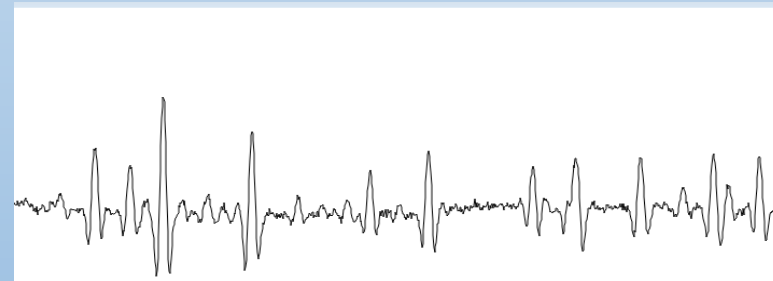
SPCAT Location: [ ] Browse SPCAT

SPFIT Location: [ ] Browse SPFIT

Output Folder Name: [ ] Browse Output

Generate Files! Exit

0%



## Future Directions:

- Fast alternatives to CALPGM
- Combination loops / spectral patterns