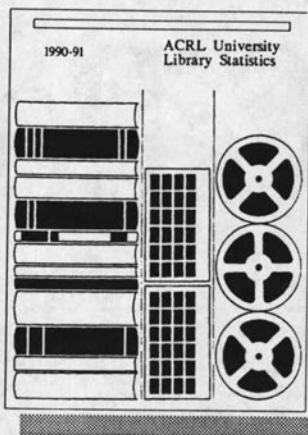


AVAILABLE NOW

ACRL University Library Statistics, 1990-91



... provides data on 106 participating libraries from the United States and Canada. Together these academic libraries expended \$410,011,197 and they employed 10,477 people last year. They held 87,313,088 volumes and during the 1990-91 academic year they lent 939,507 and borrowed 628,514 items.

The general categories of library data collected include

- collections
- personnel
- expenditures
- interlibrary loans

The institutional data elements reported include degrees offered, enrollment size, and faculty size. These data can help you make management decisions about your own library.

Purchasers of the book may request a free copy of the data in machine-readable form.

\$69.95 (\$39.95 for ACRL members)
80 pp, 1992, ISBN 0-8389-7587-9

Order Department
ALA Publishing Services
50 East Huron Street
Chicago, IL 60611

Or call toll-free
1-800-545-2433
Fax: 312-944-2641

ASSOCIATION OF
COLLEGE
& RESEARCH
LIBRARIES
ASSOCIATION OF
COLLEGE
& RESEARCH
LIBRARIES
ASSOCIATION OF
COLLEGE
& RESEARCH
LIBRARIES
ASSOCIATION OF
COLLEGE
& RESEARCH
LIBRARIES
ASSOCIATION OF
COLLEGE
& RESEARCH
LIBRARIES
ASSOCIATION OF
COLLEGE
& RESEARCH
LIBRARIES
ASSOCIATION OF
COLLEGE
& RESEARCH
LIBRARIES

A DIVISION OF THE
AMERICAN LIBRARY
ASSOCIATION

AC Power

*“LTI consistently delivers first-rate database services. Many INNOPAC users have benefited from LTI’s custom item field builds and **impressive authority control** processing. We have found that even the most complex jobs are completed on-time and in accord with library specifications.”*

Michael Upfold, Manager,
Implementation Services,
Innovative Interfaces Inc.

- ⚡ We can't promise 110, but we will promise 95. That's right. LTI guarantees that its affordable, machine-only Authority Control will link 95% or more of your library's controlled headings to an LC or LTI authority record.* No exceptions! No excuses!
- ⚡ When manual review is requested, only professional librarians are used as editors and link rates approach 100%.
- ⚡ LTI maintains the complete LC MARC authority files (updated weekly), supplemented with over 400,000 LTI authority records and 250,000 proprietary "cross links."

*Contact LTI for more information on authority record link results.

"A Commitment to Quality"



LIBRARY TECHNOLOGIES, INC.

1142E Bradfield Road Abington, PA 19001
(215) 576-6983 Fax: (215) 576-0137



From farmland to landfills, no one looks at the world like PAIS



From U.S. farm subsidies to waste disposal regulations within the European Community, PAIS makes all of your public/social policy searches fast and fruitful.

PAIS provides the most comprehensive index to literature on national and international economic, political, and social issues available. Within seconds, you can locate periodicals, books specialized journals, government documents, legislative handbooks, and more from all over the world.

And PAIS covers a vast range of subjects: international relations, education, environmental issues, social problems, business, and finance, just to name a few. What's more, PAIS gives you fresh perspectives and a deeper understanding of

global concerns via references to literature published in French, German, Italian, Portuguese and Spanish, as well as English.

Best of all, PAIS lets you select the format you're most comfortable with: CD-ROM, online, or in print with *PAIS International In Print*, a continuation and enhancement of the *PAIS Bulletin*.

So the next time you're faced with a tough public/social policy question, go with the research tool that lets you dig in deep. PAIS.



Public Affairs Information Service, Inc.
521 West 43rd Street
New York, NY 10036-4396
800-288-PAIS, 212-736-6629 (In NYC)
Fax: 212-643-2848

PAIS

No one looks at the world like PAIS

In Print: PAIS INTERNATIONAL IN PRINT • PAIS SUBJECT HEADINGS Online: PAIS INTERNATIONAL ONLINE On Compact Disc: PAIS ON CD-ROM

NEW!

**More Features,
More Benefits...**

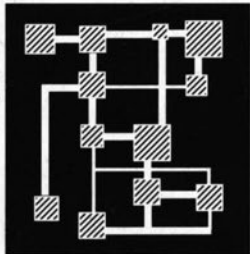
WILSONDISC[®]

CD-ROM Retrieval System



**NEW! Monthly Disc
Updates with
No Price Increase**

The nine most popular WILSONDISC databases are now updated and cumulated on a monthly basis. Subscribers to these databases receive new discs each month **with no increase in the current subscription rate.**



**NEW! Unique
No-charge Policy
for Networking and
Remote Access—
All WILSONDISC
Databases!**

No network or remote access fees are charged to:

- ◆ Public libraries—main and branches
- ◆ Academic libraries (single campus)
- ◆ School libraries (single school).



**NEW! Software—
with
Journal Tagging**

The new WILSONDISC software—Version 2.4—contains exciting enhancements, including an improved journal tagging feature which enables an unlimited number of custom messages, an enhanced WILSEARCH mode searching feature, an expanded BROWSE mode search capability (available on selected databases), *and much more!*

**To Order Call Toll-Free
1-800-367-6770**

Outside of the U.S. and Canada,
call 1-212-588-8400.
Telefax 1-212-590-1617.



T H E H . W . W I L S O N D I S C C O M P A N Y

9 5 0 U N I V E R S I T Y A V E N U E . B R O N X . N Y 1 0 4 5 2