

Architectural Theses

TEXT

Architecture

BS

1906

UNIVERSITY OF ILLINOIS
LIBRARY

Class

1906

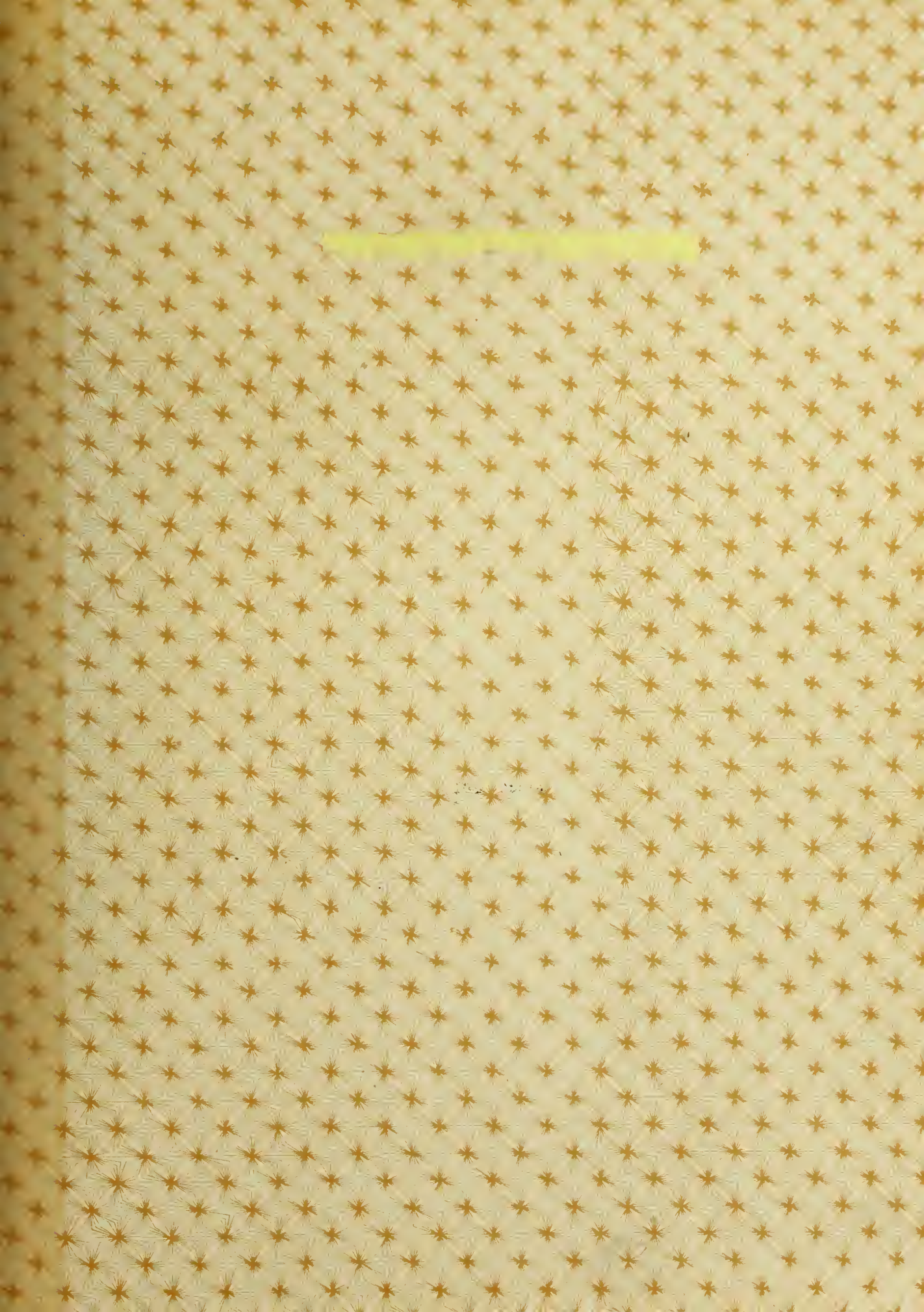
Book

Ar 2

Volume

Je 06-10M

NEW BOOK 2008



A SCHOOL OF FINE ARTS

BY

LAURANCE EGAR WILKINSON

THESIS

For the Degree of Bachelor of Science
in Architecture

COLLEGE OF ENGINEERING
UNIVERSITY OF ILLINOIS

PRESENTED, JUNE, 1906

UNIVERSITY OF ILLINOIS

June 1. 1906 190

THIS IS TO CERTIFY THAT THE THESIS PREPARED UNDER MY SUPERVISION BY

Laurance Edgar Wilkinson

ENTITLED A School of Fine Arts

IS APPROVED BY ME AS FULFILLING THIS PART OF THE REQUIREMENTS FOR THE DEGREE

OF Bachelor of Science in Architecture

N. Clifford Tucker

HEAD OF DEPARTMENT OF Architecture



Digitized by the Internet Archive
in 2013

<http://archive.org/details/schoolofflinearts00wilk>

Drawings.

The drawings which this description accompanies consist of

an elevation, scale $1/8" = 1'- 0"$

a plan , " $1/16" = 1'- 0"$

Subject.

The subject chosen for this thesis is the design of a suitable building for a School of Fine Arts, where in addition to the work in Architecture, Painting, and Sculpture, opportunity shall be afforded for work in the kindred arts and crafts.

Site.

The building is to occupy a commanding site on a slight elevation at the south end of a broad avenue in a large city.

General Requirements.

A school of this character divides itself into two parts, one semi-public in character, consisting of museums and exhibition rooms; the other, the school proper, containing class



rooms, studios and draughting rooms.

Description of Plan.

In accordance with this division the public parts are grouped around a fore court. These parts consist of a large central hall, extending through two stories, and surrounded at the second floor level by a gallery, this hall to contain a collection of large scale casts of noted buildings and of architectural detail. A wing at each end extending to the south, containing on the first floor collections of sculpture, and on the second floor collections of paintings, these latter lighted entirely from above. At the end of these wings are pavilions devoted to the administration of the school.

In the school proper, in order to provide as many rooms as possible with north light, the necessary rooms are laid out around a long narrow court, extending east and west. In the center of the court, a large lecture room or auditorium is placed. This auditorium has galleries at the second floor level, and is intended to be used for public lectures, awarding of prizes and honors, etc. At each corner of the building and connected with each other by corridors, are the rooms intended for exhibitions of school work. Between these at each e

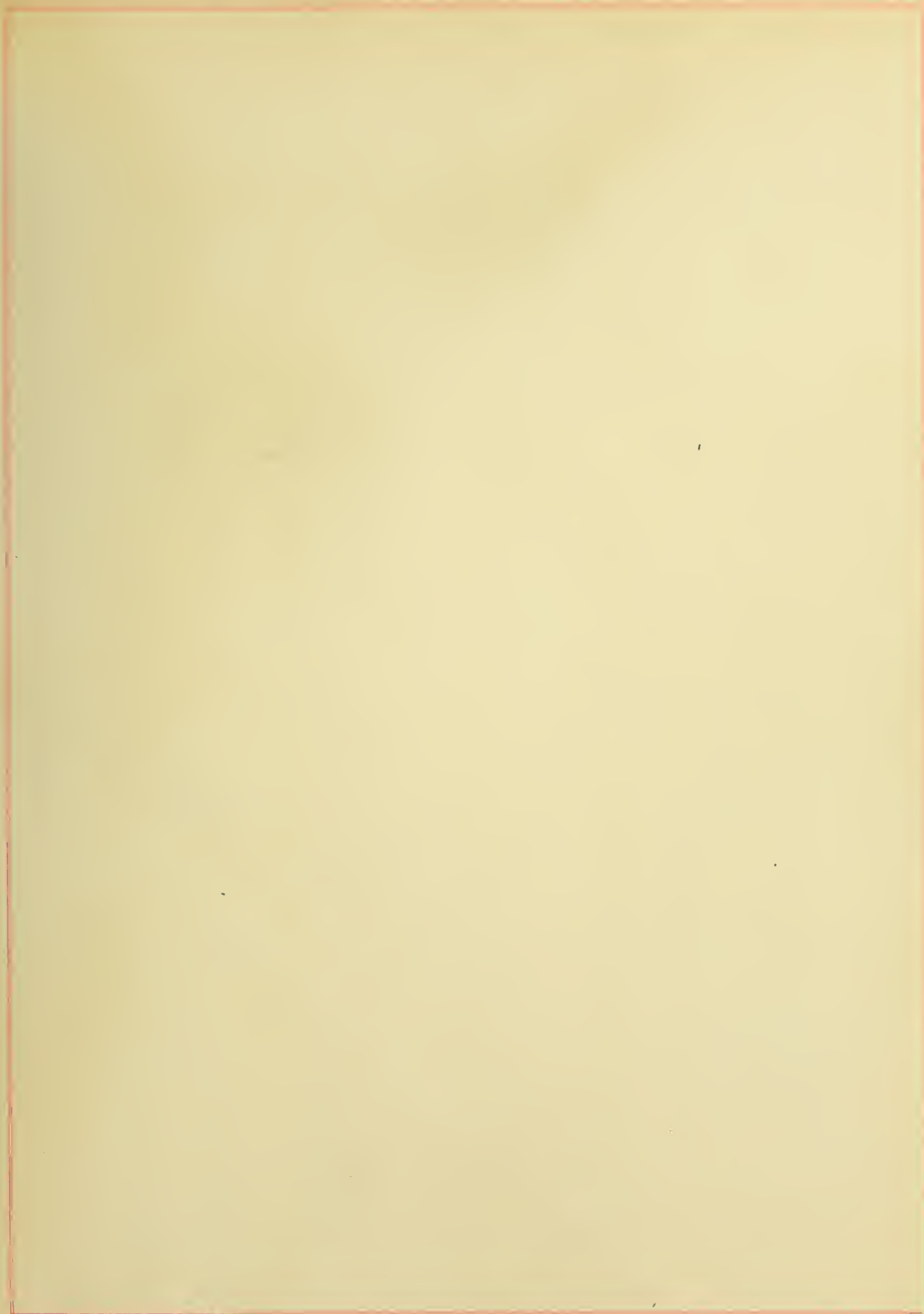
end are offices for the faculty. On the south side of the court on the first floor, is placed a large draughting room for the architectural students, both upper and lower class men being given desks in the same room. In the same position on the opposite side of the auditorium is located the library, together with librarian's office, and a room for the collection of mounted photographs and plates.

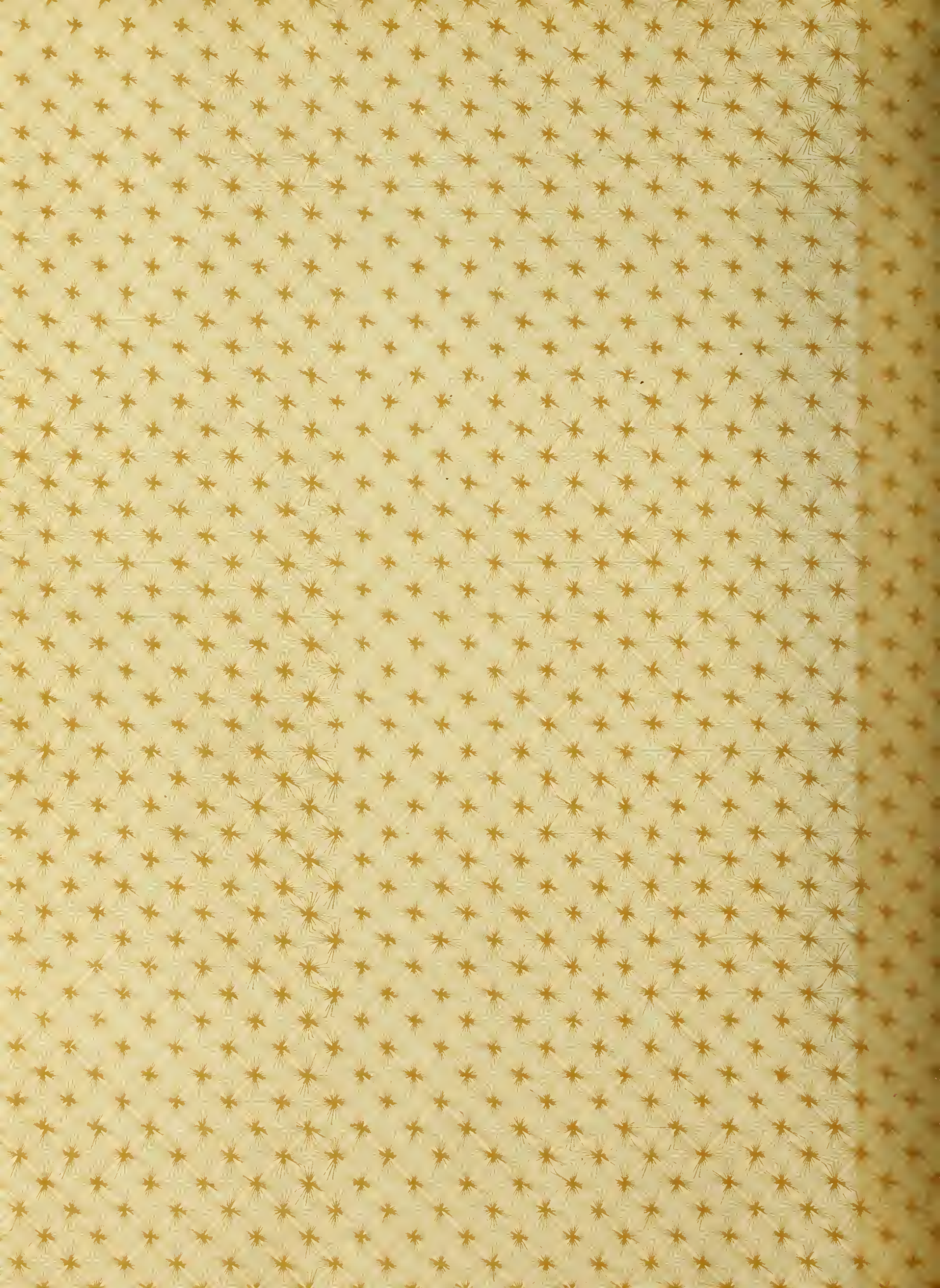
Above the library, the space is divided into club rooms for students, and a room divided up by low partitions into loges for competitions. The space above the architectural draughting room is divided into class and lecture rooms for that department. The rooms in the north part of the opposite side of the court in both stories are to be used as studies for modelling, painting, drawing from cast and life, etc. The rooms in the same part on the south side of the hall are for wood carving, book bindery, stained glass work, etching, metal work, etc. In the basement could be placed lunch rooms, storage and material supply rooms, and any power machinery that might be necessary.

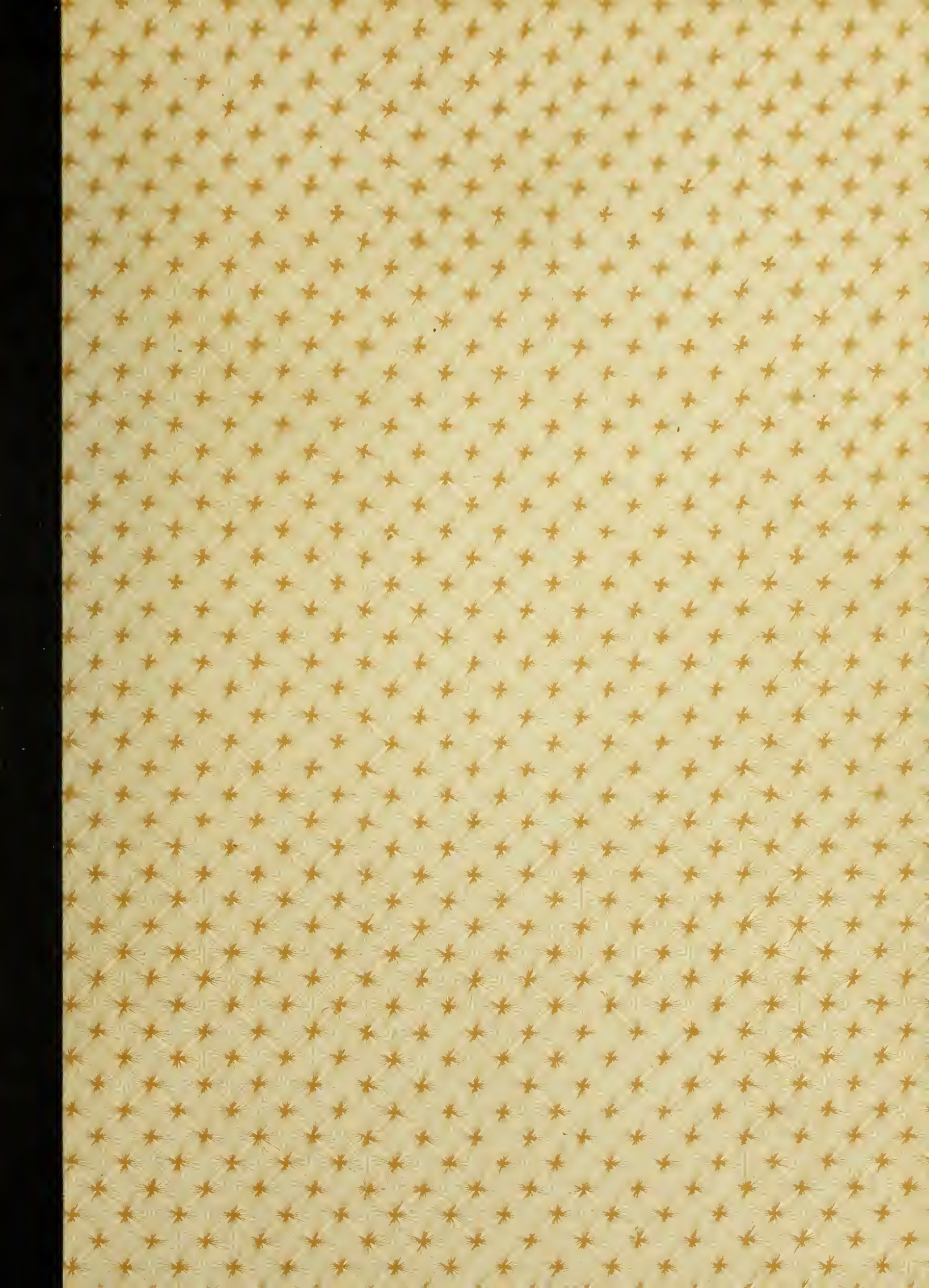
Exterior.

The necessarily great length of the building seemed to demand a treatment running through both stories and it was for this reason that the attached columns were used rather than a

horizontal division into stories.







UNIVERSITY OF ILLINOIS-URBANA



3 0112 086763437