

# 1.

Oklahoma's Top Ten Endangered Artifacts project is a campaign to increase awareness and support for Oklahoma's most important historical objects. In all, twenty-five objects have been nominated and ten will be recognized as the Most Endangered. Help determine the Top Ten by selecting the artifact you consider most worthy of this designation on the next page. You may vote for more than one object and you can vote as often as you wish. Voting ends June 1.

At the end of the voting period, votes will be tallied and the one item receiving the most votes will receive the "People's Choice Award." The other nine artifacts comprising the Top Ten will be selected by a panel of historians, conservators, and other experts who will take into consideration the importance of the item to Oklahoma. This method is used to ensure a level playing field for smaller, rural organizations.

The Top Ten Artifacts, as determined by the public and the experts, will receive the designation of a "Most Endangered Artifact" and will remain on this list while efforts are made to provide for the artifact's care.

To view detailed information about each of the objects listed below, please copy the following text and paste in a new browser window:

<http://www.culturalheritagetrust.org/sites/default/files/TopTenNominees.pdf>

### **Master Organ Rolls, Circa 1920**

**Nominated by the American Organ Institute Archives and Library**

**Norman, OK**



**I vote for the Master Organ Rolls.**

Yes

### **The Cherokee National Land Patent, Circa 1838**

**Nominated by the Cherokee National Historical Society**

**Tahlequah, OK**



**I vote for the Cherokee National Land Patent.**

Yes

### **Eagle, Carved by German POW Soldiers, Circa 1942**

**Nominated by the Cherokee Strip Museum Association**

**Alva, OK**



**I vote for the Eagle, carved by German POW soldiers.**

Yes

**Glass Plate Negative of Albert Negahnquet on Horseback at Sacred Heart Mission, Circa 1918**

**Nominated by the Citizen Potawatomi Nation Cultural Heritage Center (CHC)  
Shawnee, OK**



**I vote for the Glass Plate Negative of Albert Negahnquet.**

Yes

**The Negro American Series by Emma E. Akin, Circa 1938**

**Nominated by the Drumright Historical Society Museum  
Drumright, OK**



**I vote for the Negro American Series by Emma E. Akin.**

Yes

**San Carlos Apache Granary Basket, Circa 1900's**

**Nominated by the Mabee-Gerrer Museum of Art  
Shawnee, OK**



**I vote for the San Carlos Apache Granary Basket.**

Yes

**Stage Curtain from a One-room School, Circa 1930's**  
**Nominated by the Newkirk Community Historical Society**  
**Newkirk, OK**



**I vote for the Stage Curtain from a One-room School.**

Yes

**Class Photo of Oklahoma Christian College, Circa 1929**  
**Nominated by the Oklahoma Christian University Special Collections**  
**Cordell/Edmond, OK**



**I vote for the Class Photo of Oklahoma Christian College.**

Yes

**"Horsey," a Carved Wooden Carousel Horse, Circa 1940**  
**Nominated by the Oklahoma City Zoo ZooZeum**  
**Oklahoma City, OK**



**I vote for "Horsey," the Carved Wooden Carousel Horse.**

Yes

**Oklahoma Land Run Registers, Circa 1889-1895**

**Nominated by the Oklahoma Department of Libraries and Archives**

**Oklahoma City, OK**



**I vote for the Oklahoma Land Run Registers.**

Yes

**Historical Map of Oklahoma, Circa 1939**

**Nominated by the Oklahoma Historical Society**

**Oklahoma City, OK**



**I vote for the Historical Map of Oklahoma.**

Yes

**Kiowa Tipi, Circa 1840**

**Nominated by the Oklahoma Historical Society, American Indian Collection**

**Oklahoma City, OK**



**I vote for the Kiowa Tipi.**

Yes

**Railway Inspection Car #1045, Circa 1973**  
**Nominated by the Oklahoma Railway Museum**  
**Oklahoma City, OK**



**I vote for the Railway Inspection Car #1045.**

Yes

**Oversized 46-Star United States Flag, Circa 1908**  
**Nominated by the Oklahoma Territorial Museum/OHS**  
**Guthrie, OK**



**I vote for the Oversized 46-Star United States Flag.**

Yes

**Pawnee Bill's Calliope, Circa 1910**  
**Nominated by the Pawnee Bill Ranch and Museum**  
**Pawnee, OK**



**I vote for the Pawnee Bill's Calliope.**

Yes

**Cheyenne War Bonnet, Circa 1872**

**Nominated by the Philbrook Museum of Art**

**Tulsa, OK**



**I vote for the Cheyenne War Bonnet.**

Yes

**Oklahoma State Flag, Circa 1925**

**Nominated by the Pioneer Woman Museum**

**Ponca City, OK**



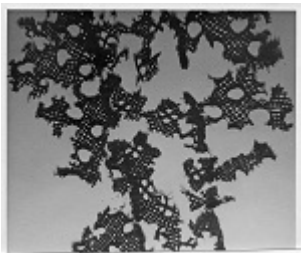
**I vote for the Oklahoma State Flag.**

Yes

**Spiro Lace, Circa 1300 AD**

**Nominated by the Sam Noble Oklahoma Museum of Natural History**

**Norman, OK**



**I vote for the Spiro Lace.**

Yes

**Payne County, Oklahoma Territory Agricultural Census Volumes, Circa 1898-1906**

**Nominated by the Stillwater Public Library**

**Stillwater, OK**



**I vote for the Payne County, Oklahoma Territory Agricultural Census Volumes.**

Yes

**U.S. Army Pigeon Basket, Circa 1944**

**Nominated by the American Pigeon Museum and Library**

**Oklahoma City, OK**



**I vote for the U.S. Army Pigeon Basket.**

Yes

**Blueprints for the Spartan Model 12 Aircraft, Circa 1944**

**Nominated by the Tulsa Air and Space Museum and Planetarium**

**Tulsa, OK**



**I vote for the Blueprints for the Spartan Model 12 Aircraft.**

Yes



**Campaign Poster Proposing the State of Sequoyah, Circa 1905**  
**Nominated by the Washington Irving Trail Museum**  
**Ripley, OK**



**I vote for the Campaign Poster Proposing the State of Sequoyah.**

Yes

**Chuck Wagon, Circa 1866**

**Nominated by the Western Plains Weatherford Genealogical Society & Western Oklahoma Historical Center, Inc.**  
**Weatherford, OK**



**I vote for the Chuck Wagon.**

Yes

**Will Rogers Polo Suit**

**Nominated by the Will Rogers Memorial Museum**  
**Claremore, OK**



**I vote for Will Rogers Polo Suit.**

Yes

**George W. Long Photography Collections**  
**Nominated by the Museum of the Western Prairie**  
**Altus, OK**



**I vote for the George W. Long Photography Collections.**

Yes