

ArcGIS Online: GIS for Everyone

James Whitacre
GIS Specialist
Scholarly Commons

UNIVERSITY LIBRARY
UNIVERSITY OF ILLINOIS AT URBANA-CHAMPAIGN

Instructor: James Whitacre

- **GIS Specialist**

Scholarly Commons, Main Library at the University of Illinois at Urbana-Champaign

Previously:

- **GIS Manager**

Carnegie Museum of Natural History

- **Master of Science in Geography, concentration in GIS and Cartography**

Indiana University of Pennsylvania



- **Bachelor of Arts in Zoology**

Ohio Wesleyan University





GIS at Scholarly Commons

- **Provide GIS research services and consultation**
- **Provide GIS workshops and training**
- **Manage the University Library's geospatial data and GIS software resources**
- **Act as a central resource for the University's GIS community and promote the use of GIS in research**



Learning Objectives

- **Introduction to ArcGIS Online map viewer to explore, search, and analyze maps**
- **Work with GIS data in ArcGIS Online**
- **Understand ArcGIS Online basic web map design and research data visualization**



ArcGIS Online



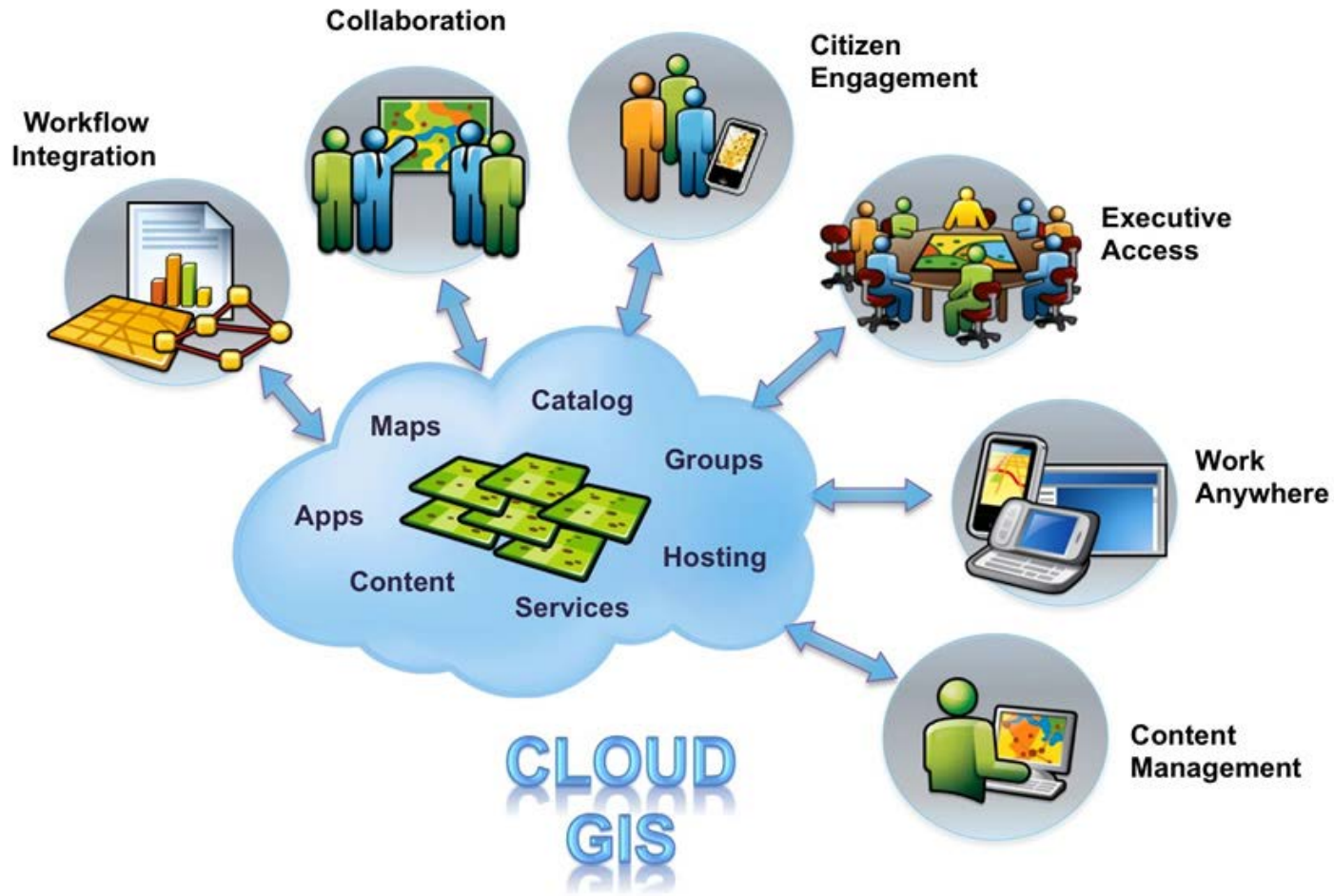
What is ArcGIS Online

- Part of the ArcGIS platform
- Cloud-based web software
- Use, create, and share interactive web maps, apps, and data
- Public vs. Organizational accounts



<http://doc.arcgis.com/en/arcgis-online/reference/what-is-agol.htm>

What is ArcGIS Online





What is an ArcGIS web map?

- **Interactive display of geographic information**
- **Opens in a standard internet browser (IE, Firefox, Chrome, etc.), mobile devices, and other ArcGIS map viewers**
- **Contains:**
 - Basemaps and Layers
 - Legend and navigation tools
- **Saved to your contents in ArcGIS Online account**

What is an ArcGIS web map?

ArcGIS My Map

NEW MAP James

Details
Add
Basemap

Save
Share
Print
Measure
Bookmarks

It's easy to make your own map. Just follow these steps:

- 1. Choose an area.**
Pan and zoom the map to an area or search by its name or address.
- 2. Decide what to show.**
Choose a Basemap then Add layers on top of it.
- 3. Add more to your map.**
Add map notes to draw features on the map.

Display descriptive text, images, and charts for map features in a pop-up.
- 4. Save and share your map.**
Give your map a name and description then share it with other people.

Esri.com · ArcGIS Marketplace · Help · Terms of Use · Privacy · Contact Esri · Report Abuse

+

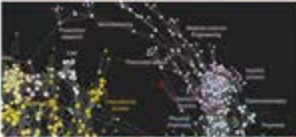
Home

-

Refresh

UNIVERSITY LIBRARY
UNIVERSITY OF ILLINOIS AT URBANA-CHAMPAIGN

9



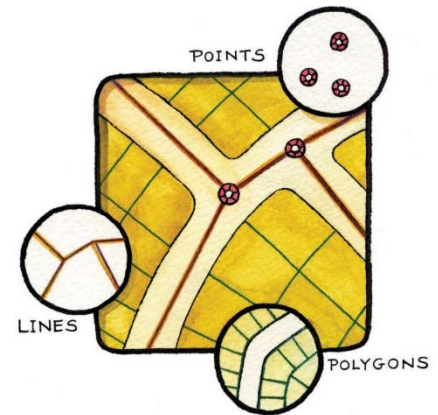
Exercise 1

Explore the ArcGIS Online Web Interface

UNIVERSITY LIBRARY
UNIVERSITY OF ILLINOIS AT URBANA-CHAMPAIGN

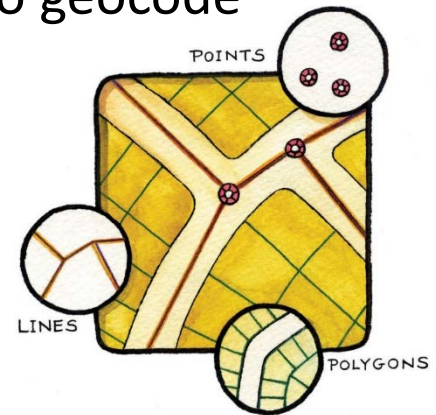
GIS Data in ArcGIS Online

- **Ready to use maps and data (Search for Layers)**
 - Layers already loaded onto ArcGIS Online
 - Layers from a GIS sever
- **GIS data layers on the web (Add Layers from Web)**
 - Layers from a GIS sever
 - Google KML (.kml or .kmz)
 - GeoRSS
 - Delimited text files (.csv or .txt)



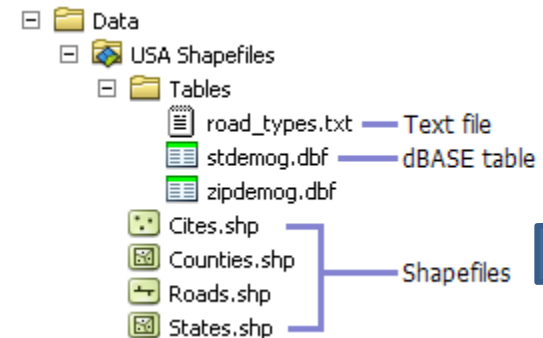
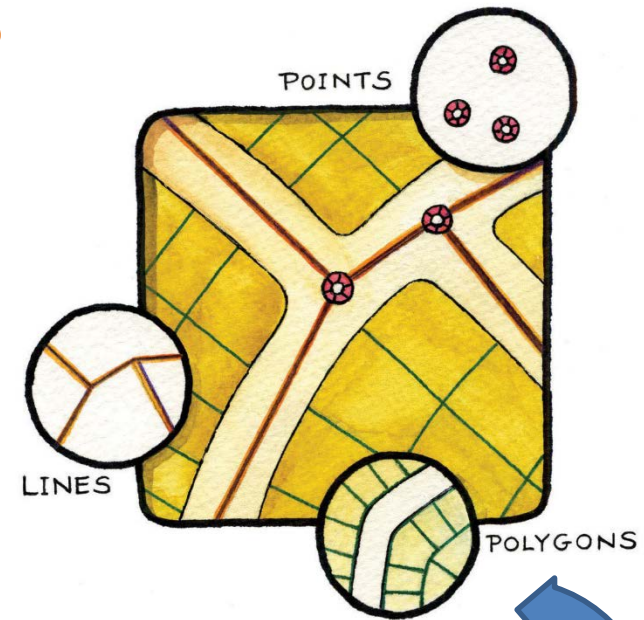
GIS Data in ArcGIS Online

- **GIS data files (Add Layers from File)**
 - Shapefiles
 - Must be compressed as .zip and include all files
 - Maximum of 1,000 features
 - Delimited text files (.csv or .txt)
 - Comma, semi-colon, or tab delimited tables
 - Must include lat/long or addresses to geocode locations
 - Maximum of 250 features if using addresses to geocode
 - Maximum of 1,000 features with lat/long
 - GPS Exchange Format (.gpx)
 - Waypoints (points)
 - Tracks (lines)
 - Routes (lines)



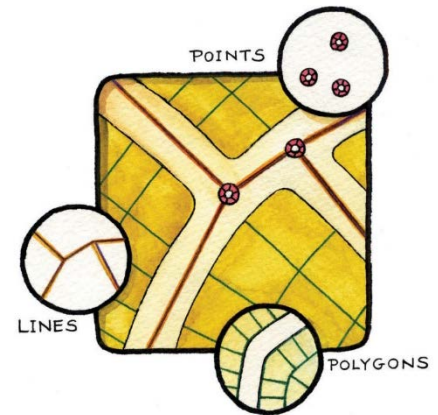
Shapefiles

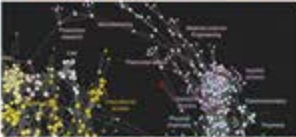
- A vector data storage format for storing the location, shape, and attributes of geographic features
- Stored in a set of related files and contains one feature class – at least three different files to make a shapefile
- Uses a simple, flat table structure



GIS Data in ArcGIS Online

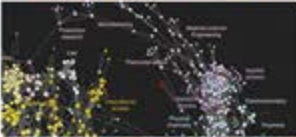
- **Map Notes (Add Map Notes)**
 - Good for quickly adding data
 - Add general info to the map for presentation purposes
 - Many templates to choose from





Exercise 2

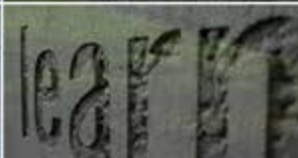
Adding Data to the Web Map



Demonstration 1

Web Map Design

UNIVERSITY LIBRARY
UNIVERSITY OF ILLINOIS AT URBANA-CHAMPAIGN



Demonstration 2

Sharing Maps and Creating Apps