



ILLINOIS

UNIVERSITY OF ILLINOIS AT URBANA-CHAMPAIGN

**PRODUCTION NOTE**

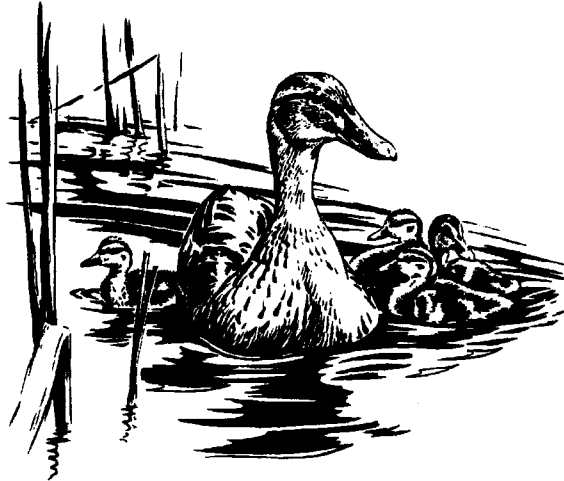
University of Illinois at  
Urbana-Champaign Library  
Large-scale Digitization Project, 2007.



*Pat Brown  
Please File: Mallard Study  
Main Office*

# ILLINOIS NATURAL HISTORY SURVEY

**CENTER FOR WILDLIFE ECOLOGY**



**Mallard Investigations**

**W-130-R-1**

**Quarterly Federal Aid Performance Report**

**Prepared by:**

**Aaron P. Yetter,  
Stephen P. Havera,  
Christopher S. Hine**

**Submitted by:**

**Stephen P. Havera  
Illinois Natural History Survey, Havana  
15 December 1997**



QUARTERLY FEDERAL AID PERFORMANCE REPORT

Mallard Investigations

W-130-R-1

Stephen P. Havera--Illinois Natural History Survey, Havana

1 October through 31 December 1997

STUDY I: NESTING BIOLOGY OF MALLARDS IN ILLINOIS

JOB NO. I.1. Nesting History and Reproductive Success of  
Mallards in Illinois

During the second quarter, study site visits were made to both the Banner Marsh State Fish and Wildlife Area (Banner) in Fulton and Peoria counties and the Metropolitan Water Reclamation District of Greater Chicago (MSD) in Fulton County to verify radio frequencies (150.000 - 151.999 MHZ) to be used by transmitters. The necessary radio telemetry equipment was ordered including prong and suture radio transmitters (Pietz et al. 1994), receivers, null antennas, and hand held antennas. Black and white aerial photographs (1:40,000; 1 in = 3,333 ft) were obtained for each study site from the University of Illinois' Map and Geography Library and scanned and saved as Tagged Image Format (\*.tif) files. Aerial photos will be used in the field to record daily locations and nest sites of radio-tagged female mallards. Aerial photographs were grouped to show an aerial view of the Banner and MSD study sites (Figs. 1-2). Scientific literature and reports relevant to radio telemetry and the nesting biology of waterfowl were obtained and reviewed.

LITERATURE CITED

Pietz, P.J., D.A. Brandt, G.L. Krapu, and D.A. Buhl. 1995.  
Modified transmitter attachment method for adult ducks. J.  
Field Ornithol. 66:408-417.

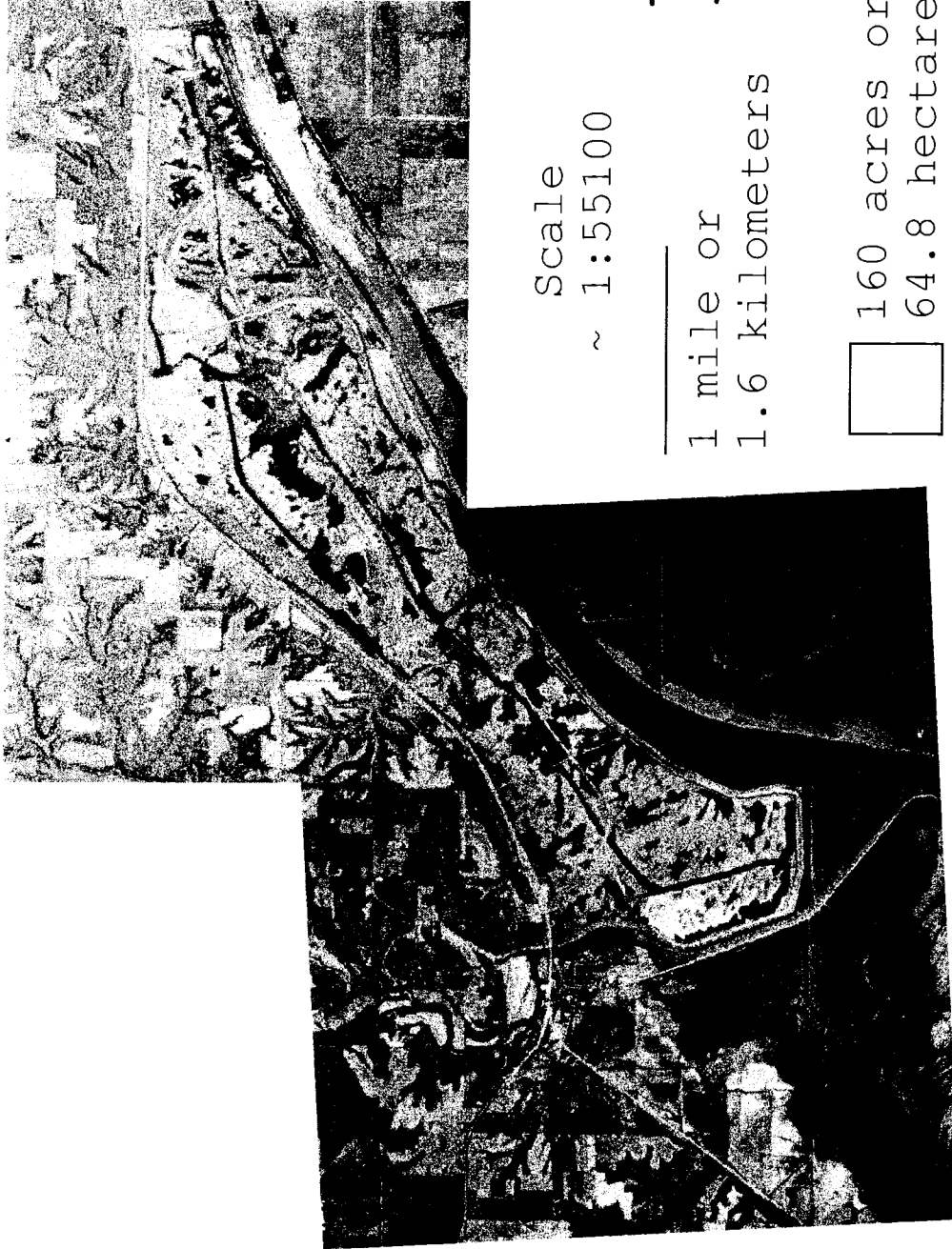
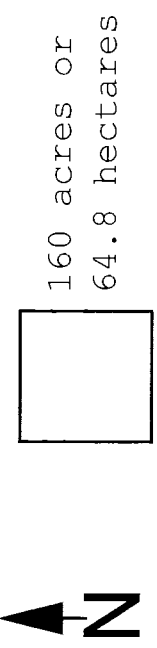


Figure 1. Scanned aerial photographs of the Banner Marsh State Fish and Wildlife Area (Banner) and adjacent lands in Fulton and Peoria counties. Aerial photographs were taken in April 1993.



Scale  
~ 1:46000

1 mile or  
1.6 kilometers

Figure 2. Scanned aerial photographs of the Metropolitan Water Reclamation District of Greater Chicago (MSD) and adjacent lands in Fulton County. Aerial photographs were taken in March 1993.

SUBMITTED BY:

A handwritten signature in cursive script that reads "Stephen P. Havera".

Stephen P. Havera  
Professional Scientist  
Illinois Natural History Survey

DATE: 15 December 1997