



I L L I N O I S

UNIVERSITY OF ILLINOIS AT URBANA-CHAMPAIGN

-

PRODUCTION NOTE

University of Illinois at
Urbana-Champaign Library
Large-scale Digitization Project, 2007.

UNIVERSITY OF ILLINOIS BULLETIN

PUBLISHED WEEKLY BY THE UNIVERSITY

VOL. XIII

MAY 29, 1916

NO. 39

(Entered as second-class matter at the Postoffice at Urbana, Ill., under Act of August 24, 1912)

BULLETIN No. 87

CORRECTION OF ECHOES AND REVER-
BERATION IN THE AUDITORIUM,
UNIVERSITY OF ILLINOIS

BY
F. R. WATSON
And
JAMES M. WHITE



UNIVERSITY OF ILLINOIS
ENGINEERING EXPERIMENT STATION

URBANA, ILLINOIS

PRICE: FIFTEEN CENTS
EUROPEAN AGENT
CHAPMAN AND HALL, LTD., LONDON

THE Engineering Experiment Station was established by act of the Board of Trustees, December 8, 1903. It is the purpose of the Station to carry on investigations along various lines of engineering and to study problems of importance to professional engineers and to the manufacturing, railway, mining, constructional, and industrial interests of the State.

The control of the Engineering Experiment Station is vested in the heads of the several departments of the College of Engineering. These constitute the Station Staff, and, with the Director, determine the character of the investigations to be undertaken. The work is carried on under the supervision of the staff, sometimes by research fellows as graduate work, sometimes by members of the instructional staff of the College of Engineering, but more frequently by investigators belonging to the Station corps.

The results of these investigations are published in the form of bulletins, which record mostly the experiments of the Station's own staff of investigators. There will also be issued from time to time, in the form of circulars, compilations giving the results of the experiments of engineers, industrial works, technical institutions, and governmental testing departments.

The volume and number at the top of the title page of the cover are merely arbitrary numbers and refer to the general publications of the University of Illinois; *either above the title or below the seal is given the number of the Engineering Experiment Station bulletin or circular which should be used in referring to these publications.*

For copies of bulletins, circulars, or other information address the Engineering Experiment Station, Urbana, Illinois.

UNIVERSITY OF ILLINOIS

ENGINEERING EXPERIMENT STATION

BULLETIN No. 87

MAY, 1916

THE CORRECTION OF ECHOES AND REVERBERATION IN THE AUDITORIUM AT THE UNIVERSITY OF ILLINOIS

BY

F. R. WATSON, Associate Professor of Experimental Physics, at the
University of Illinois, and

PROFESSOR J. M. WHITE, Supervising Architect

CONTENTS

| | Page |
|-------------------------------------------------|------|
| I. INTRODUCTION | 1 |
| 1. Preliminary | 1 |
| 2. Object of Bulletin | 2 |
| II. PRELIMINARY ACOUSTICAL INVESTIGATION..... | 2 |
| III. MODIFICATION OF INTERIOR OF AUDITORIUM | 4 |
| 3. Installation of Pipe Organ | 4 |
| 4. Method of Mounting Hair Felt..... | 5 |
| 5. The Decoration and the Lighting System | 7 |
| IV. FINAL ACOUSTICAL INVESTIGATION..... | 8 |
| 6. Investigation of Echoes | 10 |
| 7. Investigation of Reverberation..... | 12 |
| V. DISCUSSION AND CONCLUSION..... | 14 |
| VI. BIBLIOGRAPHY..... | 16 |

LIST OF FIGURES

| | Page |
|---------------------------------------------------------------------------------------------------------|------|
| 1. Floor Plan Showing Interior of the Auditorium at the University of Illinois | 3 |
| 2. View toward the Stage Showing the Grill Work for Free Passage of Sound from the Concealed Organ..... | 5 |
| 3. Photograph Showing the Mounting of the Hair Felt in Vertical Strips.. | 6 |
| 4. Photograph Showing the Side Wall of Fig. 2 when Completed..... | 7 |
| 5. Diagram Showing the Dome Surface with Wooden Ribs Separating the Hair Felt in Radial Strips..... | 8 |
| 6. Photograph Showing Auditorium before Changes Were Made..... | 9 |
| 7. Photograph Showing New Interior of Auditorium..... | 10 |
| 8. Photograph of Stage Setting Showing Experimental House with Megaphones Used for Testing Echoes..... | 11 |
| 9. Diagram Showing the Reflection of Sound from the Unpadded Pendentive in the Rear Wall | 12 |
| 10. Plan of Auditorium Showing the Concentration of Sound by the Walls under the Balcony | 13 |

THE CORRECTION OF ECHOES AND REVERBERATION IN THE AUDITORIUM AT THE UNIVERSITY OF ILLINOIS

I. INTRODUCTION.

1. PRELIMINARY.—The work described in this bulletin may be considered as a continuation of an earlier investigation on “Acoustics of Auditoriums.”*

Figure 1 shows the floor plans of the auditorium under investigation. The interior approximates a sphere cut off on the lower surface by the sloping floor of the room. There is a balcony, but no gallery. The balcony projects 12 feet over the main floor at the sides and 34 feet in the rear. The stage is built out into the room instead of being set back behind a proscenium arch as originally designed, the stage house having been omitted to reduce the cost of the building.

The domed ceiling is supported on four equal arches, and the side walls above the gallery are double curved surfaces. The limited appropriation for the building made it impossible to embellish the surfaces of the walls and ceiling, and therefore, they were left practically plain, which increased their power to reflect sound and cause echoes. There are no windows in the room, the daylight lighting being exclusively through a ceiling light 30 feet in diameter in the center of the dome.

The results set forth in the previous bulletin are briefly as follows. A systematic investigation of the acoustical properties of the Auditorium at the University of Illinois was carried on for several years. “Cut and try” methods of cure were avoided. It was shown by theory and experiment that the usual acoustical faults in a room are due first, to a reverberation, or undue prolongation of sound, and second, to echoes; both of these defects being caused by the reflection of sound from the walls. Various methods of cure were considered,—the effect of padding and paneling the walls, the possible advantage of installing wires† and sounding boards,‡ and finally, the action of

*Bulletin No. 73 of the Engineering Experiment Station, University of Illinois.

†“Inefficiency of Wires as a Means of Curing Defective Acoustics of Auditoriums.” *Science*, Vol. 35, p. 833. 1912.

‡“The Use of Sounding Boards in an Auditorium.” *Physical Review*, Vol. 1 (2), p. 241, 1913. Also *The Brick Builder*, June, 1913.

the ventilating system.* The conclusion was drawn that the most effective cure lay in padding the walls with materials which absorb sound.

An experimental diagnosis of the acoustical properties of the Auditorium was made. This was done by tracing the path pursued by a small bundle of sound when it was sent in a definite direction and noting what became of it after reflection. Several methods of tracing sound were tried before a suitable one was found. A ticking watch backed by a reflector, or a metronome enclosed in a box having a directed horn gave definite data. However, a hissing arc light with a parabolic reflector was much more satisfactory and gave conclusive results. Enough data were secured in this way to show the general behavior of the sound in the room and also to indicate how the chief echoes were set up.† Attempts were then made to secure satisfactory acoustics by hanging curtains and draperies at critical points suggested by the diagnosis. This result was finally secured by suspending four large pieces of canvas in the dome.

From the acoustical standpoint, the Auditorium was then in a much improved condition. The canvas, however, was very unsightly and did not accord with the architectural features of the room. It was therefore proposed that the materials used to correct the acoustics be installed in such manner as to remedy this fault. It was also proposed at this time to install a pipe organ, to decorate the interior of the room, and to change the lighting system.

2. *Object of the Bulletin.*—The object of this bulletin is to describe the changes that were made in the Auditorium to carry out the proposals just mentioned, and especially to show how the acoustical properties were modified.

II. PRELIMINARY ACOUSTICAL INVESTIGATION.

It was desired that the materials used to correct the acoustics be installed in such manner as to conform with the architectural features of the Auditorium. This introduced a new problem since in the provisional cure the canvas sheets in the dome hung with very little conformity to the curvature of the walls. A further complication appeared when it was found by calculation that the amount of material necessary to correct the reverberation was insufficient to pad all the

*"Air Currents and Acoustics of Auditoriums." Engineering Record. Vol. 67, p. 265, 1913.

†"Echoes in an Auditorium." Physical Review, Vol. 32, p. 231, 1911.

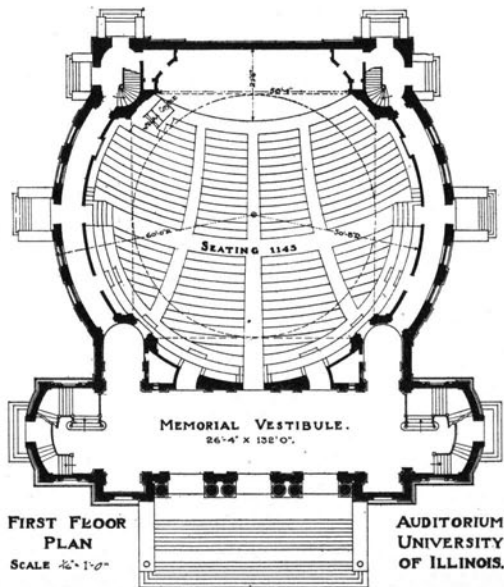
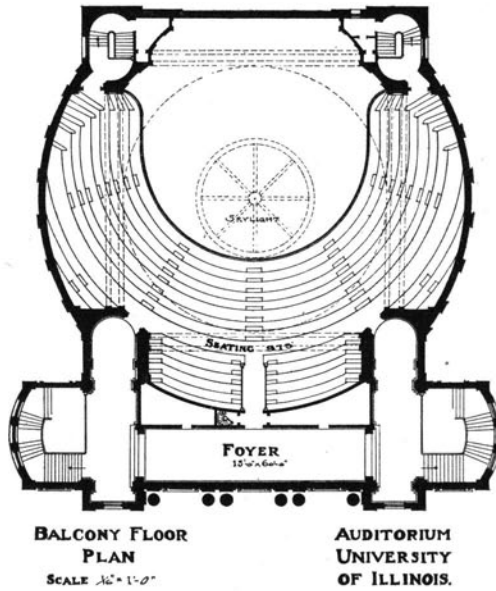


FIG. 1. FLOOR PLANS SHOWING INTERIOR OF THE AUDITORIUM AT THE UNIVERSITY OF ILLINOIS WHICH WAS CORRECTED FOR ECHOES AND REVERBERATION.

walls that produced echoes. It was desirable to eliminate the echoes, but it was regarded as risky to install too much sound absorbing material, owing to the danger of making the Auditorium too dead for sound.

Because of these difficulties it was decided to carry on further experiments and to secure more data before deciding on the final cure. Accordingly, one large curved wall was covered with strips of one-inch hair felt, 30 inches wide, placed vertically and 30 inches apart so as to leave bare spaces between them. This arrangement was satisfactory for several reasons; it did not change the curvature of the wall; it used only half the amount of material necessary to cover the entire wall; and because of diffraction and interference effects, it was theoretically more efficient in breaking up the reflected sound than if the same material were spread continuously over the whole surface. Although encouraging, the results were not so marked as expected in diminishing the echoes.

On the basis of this experiment, plans were made for covering other walls in a similar way, except that the hair felt was to be mounted on wooden ribs built out from the wall surface. Such an installation seemed more likely to break up the incident sound than the first plan of mounting the hair felt snugly against the wall. The sound wave on striking these outer felt strips would suffer partial reflection and change of phase, while the remaining portion of the sound would pass through the open spaces and be spread out by diffraction and reflection from the walls. The hair felt strips would oppose the incident and reflected waves, thus breaking up the original sound and diminishing its intensity and possibility of producing echoes.

Because the scaffolding erected for the use of the workmen interfered with the passage of sound waves, the efficiency of this method of placing the felt could not be tested step by step as the material was mounted. The test was deferred, therefore, until the installation was completed. In the meantime the pipe organ was installed, the interior was redecorated, and the lighting system changed, so that only the combined effect of all these factors on the acoustics could be investigated.

III. MODIFICATIONS OF THE INTERIOR OF THE AUDITORIUM.

3. *Installation of the Pipe Organ.*—The organ was mounted in a unique way by dividing it into two parts and placing them in lofts 24 feet above the ends of the stage with a distance of 75 feet between centers. This arrangement placed the organ at a considerable distance

above the audience. The absence of any vertical surface between the lofts and the audience room prevented any visible arrangement of the organ pipes, but the necessary free exit of the sound was provided for by the construction of ornamental plaster grills covering the pendentives on either side of the stage. (See Fig. 2.)

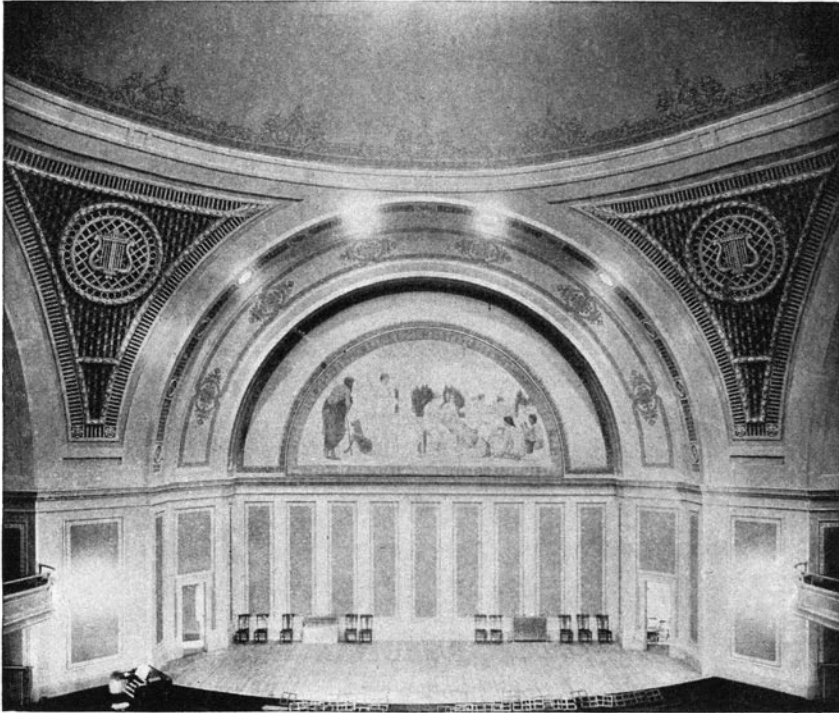


FIG. 2. VIEW TOWARD THE STAGE SHOWING THE GRILL WORK FOR FREE PASSAGE OF SOUND FROM THE CONCEALED ORGAN. THE ORGAN CONSUL IS SHOWN TO THE LEFT. CARPET IS REMOVED FROM STAGE IN PREPARATION FOR AN ORCHESTRA CONCERT

4. *Method of Mounting Hair Felt.*—The hair felt was mounted on thin furring strips which were bent to fit the curvature of the surfaces. The dome above the arches and the double curved side walls and single curved rear wall above the balcony were padded in this way. The felt was mounted in vertical strips on the west side wall as shown in Fig. 3. Fig. 4 shows the wall after the material was installed and decorated.

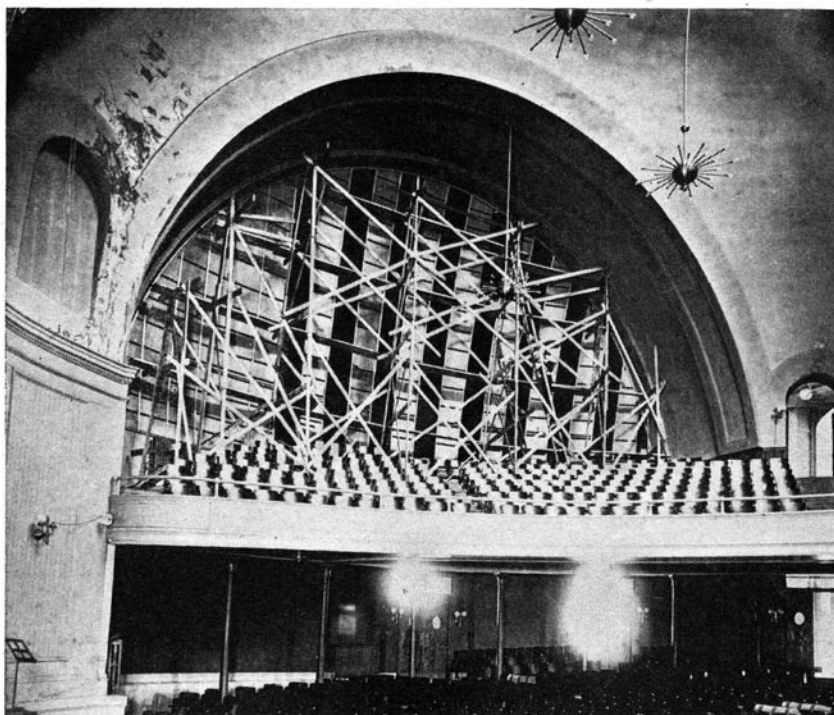


FIG. 3. PHOTOGRAPH SHOWING THE MOUNTING OF THE HAIR FELT IN VERTICAL STRIPS. THE MATERIAL WAS FASTENED TO THIN FURRING STRIPS WHICH COULD BE BENT TO CONFORM TO THE CURVATURE OF THE SURFACE

On the east balcony wall the felt was mounted on wooden ribs so that it stood concentric with the plaster surface at a distance of one foot. Eighteen inches below the edge of the skylight in the dome radial strips of felt which approached the wall until they touched at the crown of the arches, were mounted on wooden ribs. (Fig. 5.) The hair felt used was the Akustikos Felt developed especially for correction of acoustical faults by the H. W. Johns-Manville Company under the direction of Professor Sabine.

Before the changes were made in the Auditorium, Professor Sabine visited the building at the invitation of President James. After this visit, he wrote to President James as follows: "If such confirmation of the results of Professor Watson's investigation is necessary, please permit me to assure you that you will obtain an excellent effect from following out his suggestions in all detail." The final installation was

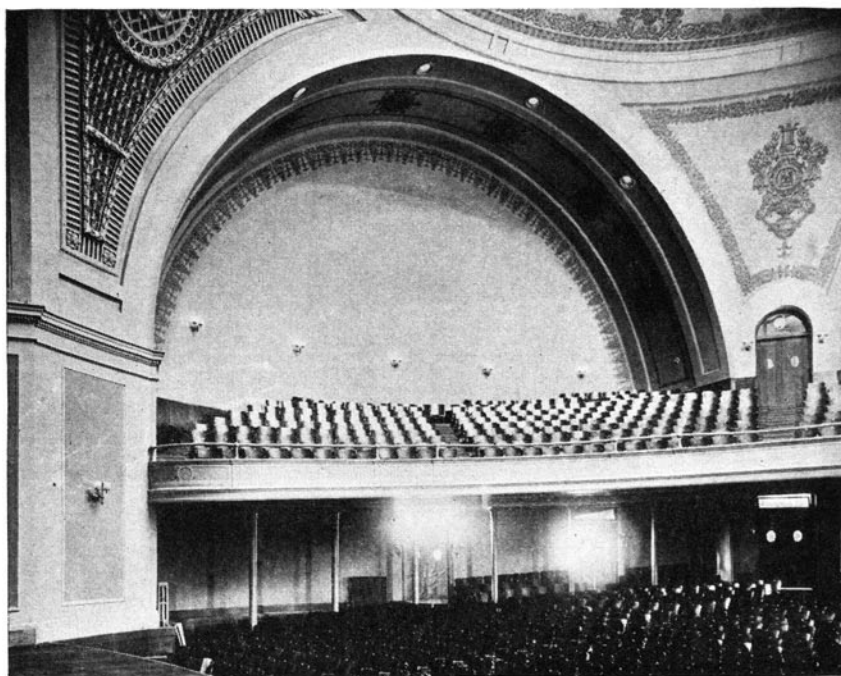


FIG. 4. PHOTOGRAPH SHOWING THE SIDE WALL OF FIG. 2 WHEN COMPLETED. A REP OF SUITABLE COLOR WAS STRETCHED OVER THE ENTIRE SURFACE AND DECORATED. IT WAS NECESSARY FOR THE FREE PASSAGE OF THE SOUND THAT THE MATERIAL USED IN DECORATING SHOULD NOT CLOSE THE PORES OF THE REP

modified somewhat from the original plans, but the general features were maintained.

5. *The Decoration and the Lighting System.*—The modification of the lighting system involved the elimination of the suspended fixtures. The wall brackets were retained, but the main lighting was changed to a semi-indirect system with reflectors above the arches and around the skylight. An ivory tone was selected for the basic color in the redecoration. Ornamentation was stenciled and painted on the various walls and surfaces to give a unified effect. With the exception of the ornamental borders the rep covering the padded surfaces was left its natural color. The difference between the old and new interiors is shown in Figs. 6 and 7. The modifications relieved the auditorium of its cheerless, barn-like interior.

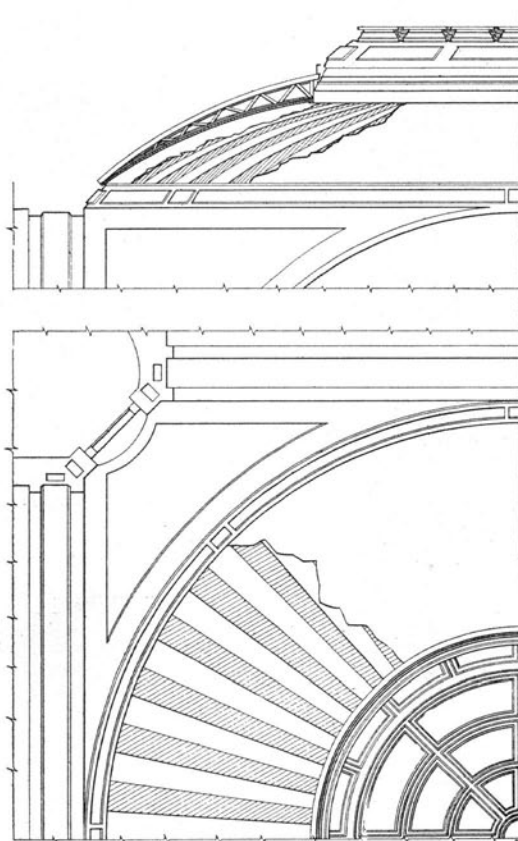


FIG. 5. DIAGRAM SHOWING THE DOME SURFACE WITH WOODEN RIBS SEPARATING THE HAIR FELT IN RADIAL STRIPS. THIS FALSE CEILING ARRANGMENT WAS THOUGHT MORE EFFECTIVE FOR ABSORPTION OF SOUND THAN IF THE MATERIAL WERE MOUNTED SNUGLY AGAINST THE SURFACE

IV. FINAL ACOUSTICAL INVESTIGATION.

The remodeled Auditorium has been tested under varied conditions for music and speaking, and popular opinion has pronounced the acoustics satisfactory. A speaker with a moderate voice can be heard distinctly by auditors in the most distant seats. The music of the new pipe organ, according to experts, is satisfactorily rendered. The room is also suited for orchestra music, though for this case, it has been found advantageous to follow the usual custom of leaving the wooden floor of the stage bare of carpet so as to reenforce the sound from the instruments.

While the Auditorium has proved to be generally satisfactory, a detailed investigation of the acoustical effects secured by the modification of the room was thought desirable. A request was made, accordingly, that auditors report any echoes or acoustical disturbances however slight they might be. About a dozen replies were received, and on the basis of these and other considerations, a systematic investigation was undertaken.

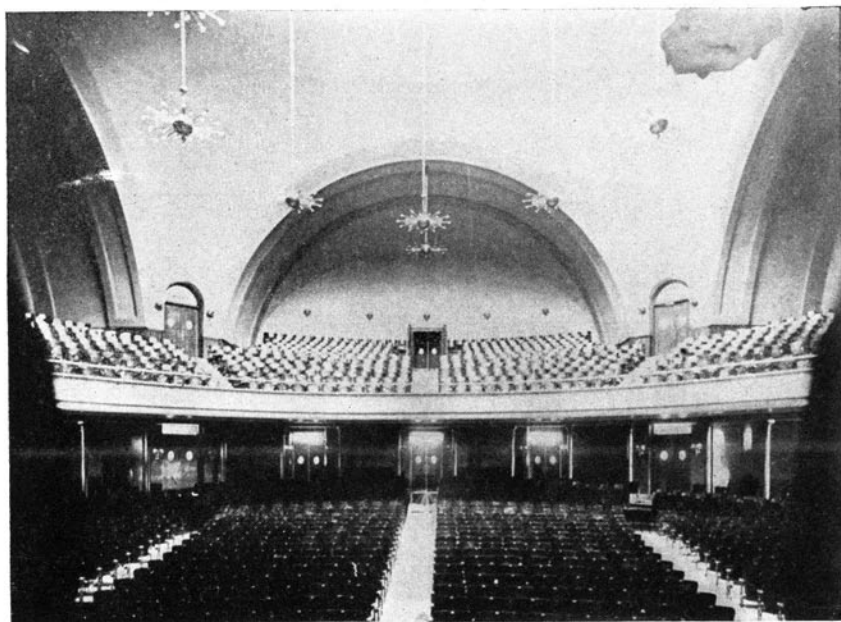


FIG. 6. PHOTOGRAPH SHOWING AUDITORIUM BEFORE CHANGES WERE MADE

The acoustical results, beneficial and otherwise, may be anticipated by considering the changes made. According to Sabine, the hair felt installed would reduce the reverberation. This would also eliminate echoes if installed on certain surfaces in accordance with the analysis; but, since the amount of material used to correct the reverberation was insufficient to cover all the walls, acoustical defects might still be set up by the unpadded surfaces, especially by the pendentives. The pipe organ, by generating musical sounds that emerged through the pendentives in the dome, might introduce new acoustical disturbances. The openings made in the surfaces of two of the pendentives for the passage of the organ music would reduce the general



FIG. 7. PHOTOGRAPH SHOWING NEW INTERIOR OF AUDITORIUM. THE SUSPENDED LIGHTING FIXTURES WERE REMOVED, THE INTERIOR REDECORATED, AND THE REAR WALL IN THE ALCOVE PADDED

reverberation and would also diminish echoes. The changes in the decoration and in the lighting system would produce little effect.

6. *Investigation of Echoes.*—Tests were made in several ways to determine the presence of echoes. The opinion offered by auditors that the echoes had generally disappeared was, of course, the most satisfactory evidence. One test was made by talking through a megaphone toward different walls (Fig. 8). The sound was generated inside a small house and its direction of propagation controlled by two megaphones, one being pointed toward an observer and the other toward a wall which previously gave echoes. No distinct echo could be obtained by speaking simultaneously into the two megaphones. The ticks of a metronome produced very little additional effect, but when a sharp intense metallic sound was tried, echoes were obtained from the unpadded walls but only faint responses from the padded walls. The intense hissing sound of an arc light backed by a parabolic reflector gave more pronounced results. It showed that the padded walls produced a marked effect in reducing the intensity of the sound.

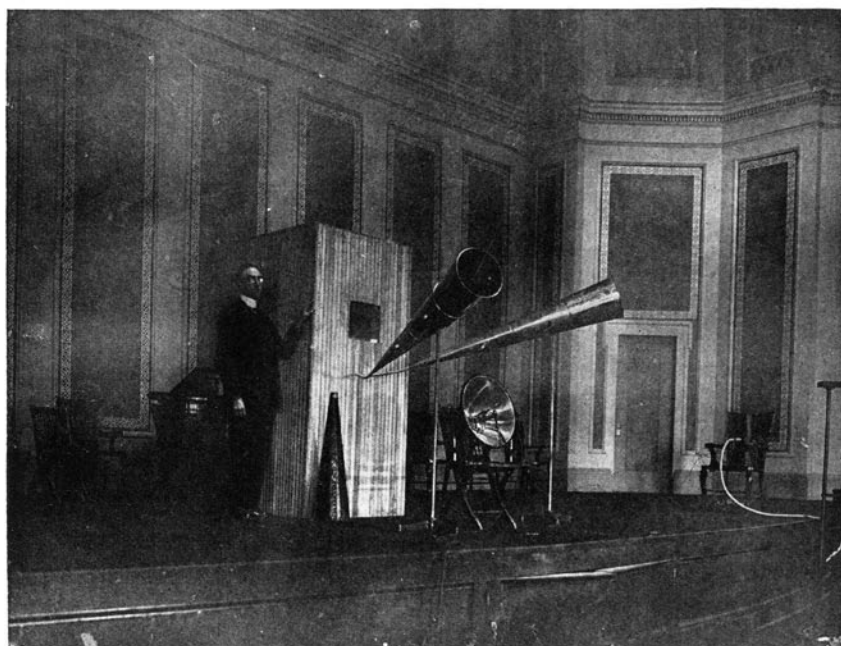


FIG. 8. PHOTOGRAPH OF STAGE SETTING SHOWING EXPERIMENTAL HOUSE WITH MEGAPHONES USED FOR TESTING ECHOES

The effect of the unpadded pendentives in the rear dome surface is shown in Fig. 9. The cone of incident sound received by each pendentive is small and, after reflection, spreads over a large area. It was therefore anticipated that little disturbance would result. This prediction was not entirely correct since the echoes reported by auditors, so far as could be ascertained, came from these two walls. An echo was perceptible when the speaker faced directly toward one of these pendentives so that the profile of his face was seen by an auditor seated at one side of the auditorium. The direct sound coming to the auditor was then diminished while the reflected sound was augmented, thus producing an echo.

Other unpadded walls, notably the side walls under the balcony, still set up concentrations of sound. Thus, an observer at A, Fig. 10, can hear not only the direct sound from the speaker, but also the portion that is concentrated by reflection from B. He does not hear an echo because the time interval between the direct and reflected sounds is too short to enable his ear to detect them separately. The result is

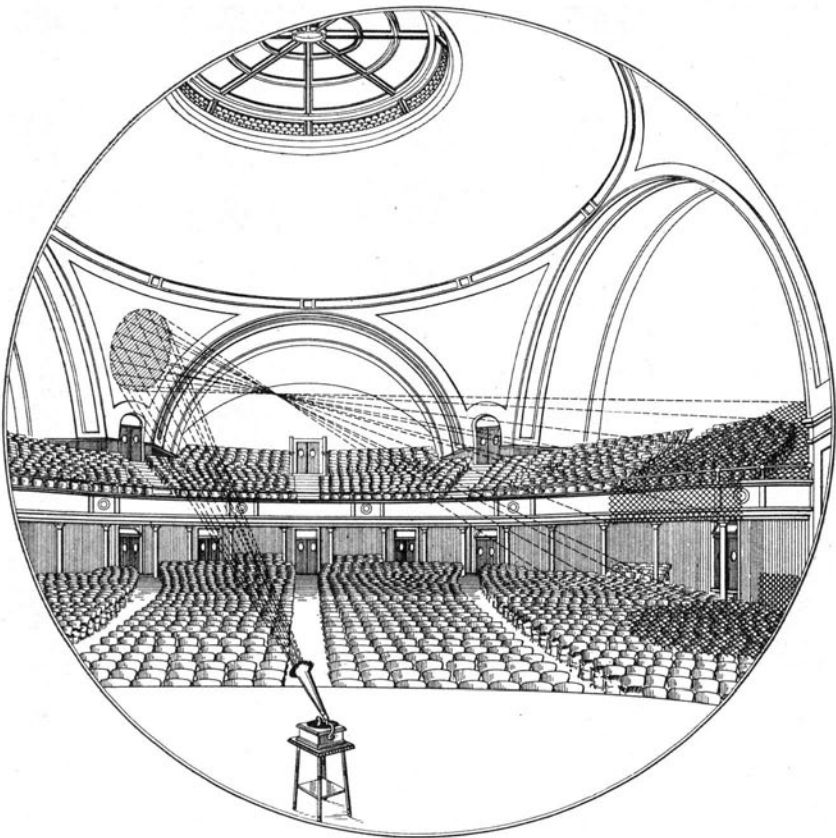


FIG. 9. DIAGRAM SHOWING THE REFLECTION OF SOUND FROM THE UNPADDED PENDENTIVE IN THE REAR WALL. ECHOES SET UP BY THIS WALL CAN OCCASIONALLY BE NOTED

much the same as if his neighbor on the side toward the wall were to say the words of the speaker in his ear at the same time that he received them from the speaker. The auditor realizes that something is peculiar about the sound but usually does not understand the cause of the trouble. An auditor at C, however, may get an echo when the speaker faces the point D.

7. *Investigation of the Reverberation.*—By means of Sabine's formula and coefficients of absorption* the time of reverberation of the Auditorium was found and a calculation was made to determine the amount of sound absorbing material necessary to correct the fault. The following tabulation shows the method employed:

*American Architect, 1900.

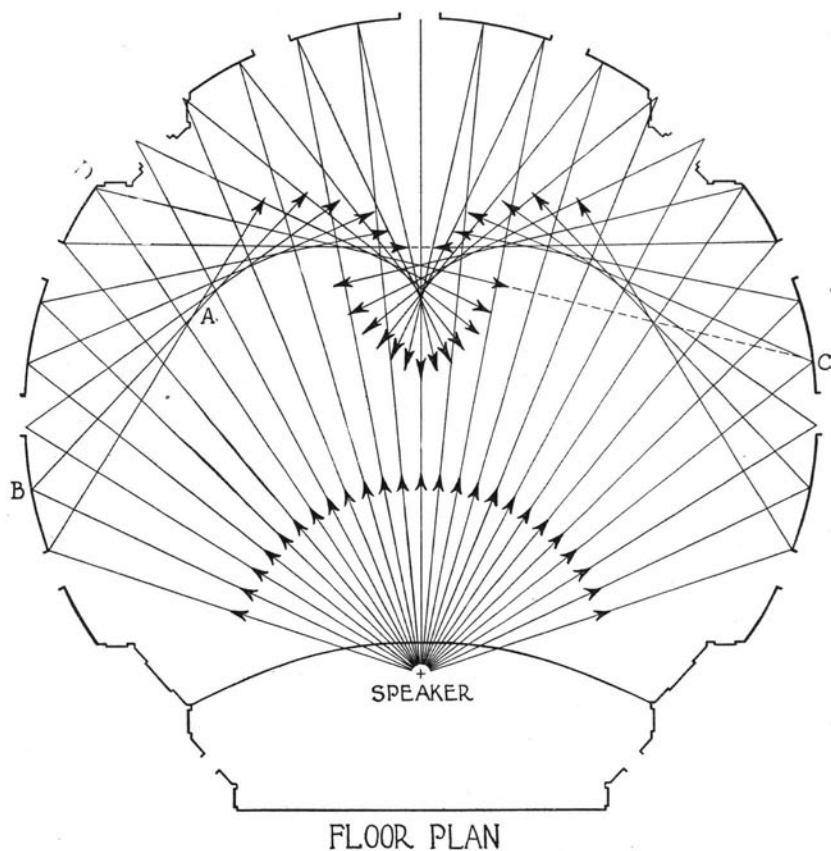


FIG. 10. PLAN OF AUDITORIUM SHOWING CONCENTRATION OF SOUND BY THE WALLS UNDER THE BALCONY

| Material | Exposed Area in sq. meters | Coeff. of Absorption | Total Absorption |
|----------------------------------------------|-------------------------------|-------------------------|---------------------|
| Plaster on lath | 2000 | 0.0330 | 66.0 |
| Plaster on tile | 510 | 0.0250 | 13.0 |
| Wood work | 1630 | 0.0610 | 99.0 |
| Glass | 83 | 0.0270 | 2.3 |
| Cocoa matting | 145 | 0.0200 | 2.9 |
| Wood seats | 2150 seats | 0.0082 | 17.7 |
| | | | <hr/> |
| | | | 201 |
| Average audience | 1200 people | 0.44 | 527 |
| | | | <hr/> |
| | | | Total 728 |
| Volume of room 12000 cubic meters. | | | |

Substituting these data in the formula $t=0.164 V \div a$, in which t is the time of reverberation, V the volume of the room and a the total absorbing power, the following equation for the empty room is obtained:

$$t=0.164 \times 12000 \div 201 = 9.8 \text{ seconds.}$$

When an audience of 1200 people is present,

$$t=0.164 \times 12000 \div 728 = 2.7 \text{ seconds.}$$

This value is too great for good acoustics and a reverberation results. To correct the fault, absorbing material should be added until the time of reverberation is reduced to about 1.8 seconds; this value having been found satisfactory for halls as large as the Auditorium when used for both music and speaking.

The amount of Akustikos Felt needed to carry out the plans already described was 3315 square feet. This was less than the area necessary for felt mounted snug against the wall since the coefficient of absorption is greater when the felt is mounted out from the wall.* Calculations, which allowed for the sound absorbing power of the felt and the other alterations in the Auditorium indicated that the time of reverberation would be reduced to about 1.90 seconds with 1200 people present.

V. DISCUSSION AND CONCLUSIONS.

The Auditorium fulfilled the theory held many years ago by Lord Rayleigh* that a large room with hard, non-porous walls and with few windows has a prolonged resonance, and that the best chance of improvement lies in padding the walls and ceiling with sound absorbing materials. Thus, the installation of hair felt in the Auditorium reduced the reverberation; the amount of reduction being calculated in advance by Sabine's† formula and constants of absorption.

The amount of hairfelt necessary to correct the reverberation was insufficient to cover all the walls, and it was found that some of these unpadded surfaces still produced echoes. This action was anticipated in part from the general considerations discussed by Rayleigh‡ in which the possibility of reflection of sound was shown to depend on the positions of the source and receiver of sound, and also upon the size and form of the wall compared with the wave length of the incident sound.

*Sabine. Architectural Quarterly of Harvard University, p. 22, March, 1912.

*Theory of Sound, Vol. 2, pp. 287 and 351.

†American Architect, 1900.

‡Theory of Sound, Vol. 2, p. 283.

The installation in an auditorium of considerable sound absorbing material eliminates the objectional condition of satisfactory reverberation being wholly dependent on the sound absorbing power furnished by an audience. This means that rehearsals without an audience can be conducted satisfactorily and that a speaker addressing a small audience is not obliged to contend with a distressing reverberation.

The theoretical advantages in absorbing and breaking up sound waves when hair felt is mounted out from a wall instead of placed snugly against the surface do not appear to be so great as expected. Observers listened to sounds reflected from both types of surface and concluded that a surface having the hair felt mounted out from the wall was more efficient. The conclusions, however, should be checked by quantitative, instrumental measurements since the ear is inaccurate in its estimation of the comparative intensities of different sounds.* It appears that the felt is more effective when mounted out from the wall, but there is some question whether or not the advantages secured justify the additional expense of installation and the greater risk of fire.

The music of the pipe organ emerging in large volume from the pendentives in the dome introduced concentrations of sound different from those set up when the source of sound was on the stage. This made it desirable to pad other walls in addition to those requiring padding for the single source of sound.

The effect of the organ music confirmed one conclusion set forth by Jäger†; namely, that the strength of the source of sound for good acoustics should be in correct proportion to the volume of the room. It appears that the Auditorium is too small for loud organ music since the sound in this case becomes unpleasantly intense. On the other hand, it appears that the volume is fairly well suited for softer organ music and for a weak source of sound, such as a speaker with a moderate voice. In this connection Jäger contends that an auditorium is limited in its acoustical possibilities; that if a room is too large, it is impossible to make it satisfactory for weak sources of sound. He points out also that the problem of correcting faulty acoustics must include a consideration of intensity of sound as well as of reverberation; that is, the variable factors at command, the volume and absorbing power of the room and the source of sound, must be so propor-

*Rayleigh, Scientific Papers, Vol. II, p. 132.

†“Zur Theorie des Nachhals,” Sitzungsberichten der Kaiserl. Akademie der Wissenschaften in Wien. Matem-naturw. Klasse; Bd. CXX, Abt. IIa, Mai, 1911.

tioned as to give not only a suitable reverberation but also an acceptable intensity of sound. He discusses the limitations in obtaining this desired result.

Another deduction made by Jäger which applies rather directly to the Auditorium is that the ratio S/W should be large for good acoustics, in which S is the total surface of walls, furniture, and fixtures struck by the sound and W is the volume of the interior. Theoretically, this ratio is smallest for a sphere, and, since the Auditorium approximates a hemisphere, the excessive reverberation might have been predicted.

Reverberations and echoes were corrected simultaneously by installing a suitable amount of hair felt on the walls which produced echoes. To locate these walls, a new method was developed in which the source of sound was an arc light as explained earlier in this bulletin.

The investigation showed that curved walls are worse acoustically than plane walls since they produce undesirable concentrations of sound and echoes. It also appears that the openings in the pendentives for the organ music and the ventilation openings act similarly to open windows and thus reduce reverberation and diminish echoes.

One acoustical disturbance which was not corrected was that due to talking and walking in the foyer and on the stairs immediately outside the Auditorium. The sounds of footsteps and the reverberation caused by loud talking and accidental noises in the foyer could be reduced by covering the stairs and foyer with a yielding material, such as cork and by padding some of the walls.

It is apparent from this discussion that the means employed to correct the acoustics, as exemplified by this complex problem, were based upon established scientific principles and this investigation and others of like nature have served, to a large extent, to dispel the mystery surrounding the action of sound in auditoriums.

BIBLIOGRAPHY ON ACOUSTICS OF AUDITORIUMS.

(This is an addition to the bibliography published with Bulletin No. 73 on "Acoustics of Auditoriums.")

Aigner, Franz "Experimentella Studie über den Nachhall" Sitzungsberichte der Kaisl. Akad. der Wissenschaften, in Wien, Math - Naturwiss, Klasse. Vol. CXXIII, Abt. IIa, July, 1914. An experimental investigation of the reverberation in rooms in which instruments were used instead of the ear to measure the damping

- of sound. This work verified Jäger's formula and also the empirical formula and absorption coefficients found by Sabine.
- Franklin, W. S. "Acoustics of the Auditorium." Text-book on "Light and Sound." Franklin and MacNutt, pp. 282-290.
- McGinnis, C. S. and Harkins, M. R. "The Transmission of Sound Through Porous and Non-porous Materials." *Physical Review*, Vol. 33, p. 128, 1911.
- Miller, D. C. "The Science of Musical Sounds." The Macmillan Co., 1916. A set of lectures giving the results of years of painstaking investigation of the characteristics of tones produced by the voice and by different musical instruments.
- Moulton, R. H. "A New Memorial to Washington." *Independent*, July 5, 1915. Describes a proposed auditorium designed acoustically by Professor Sabine.
- Rood, O. N. "On a Method of Studying the Reflexion of Sound-Waves." *Amer. Jour. of Science*, (3), Vol. 19, p. 133, 1880.
- Sabine, Wallace C. "Architectural Acoustics: The Insulation of Sound." *The Brick Builder*, Vol. 24, p. 31, February, 1915.
- Sabine, Wallace C. "Architectural Acoustics." *Jour. Franklin Inst.* Vol. CLXXIX, p. 1, January, 1915. A résumé of his investigations in this subject.
- Watson, F. R. "Acoustics of Auditoriums." Bulletin No. 73, University of Illinois Engineering Experiment Station, University of Illinois Bulletin, Vol. XI, No. 29, March, 1914. Reprinted in full in the *Scientific American Supplement*, Vol. LXXVIII, p. 358, December 5, and p. 380, December 12, 1914.
- Watson, F. R. "Acoustics of Theatres." *The Play-Book*, Madison, Wisconsin, Vol. 2, p. 19, August, 1914.
- Watson, F. R. "Acoustics of Auditoriums." Investigation of the Acoustical Properties of the Armory at the University of Illinois. *The Brickbuilder*, Vol. 24, p. 257, October, 1915.
- Watson, F. R. "Acoustics of Auditoriums. Concerning the Theory of Reverberation." *The American Architect*, Vol. CVIII, pp. 369-374, December 8, 1915. A translation of an important paper by G. Jäger on the theory of reverberation showing the limitations of halls in regard to acoustics.
- Watson, F. R. "An Investigation of the Transmission, Reflection and Absorption of Sound by Different Materials." *Physical Review*, Vol. 7, (2), pp. 125-132, January, 1916.
- Whitman, F. P. "On the Acoustical Efficiency of a Sounding Board." *Science*, Vol. 38, p. 707, November 14, 1913. A short account of

experiments made to determine the effect of a sounding board on the acoustical qualities of the chapel.

Whitman, F. P. "On the Acoustics of the Chapel of Adelbert College." *Science*, Vol. XLII, p. 191, August 6, 1915. A continuation of the previous work giving description of tests of acoustics after the chapel had been corrected for reverberation.

PUBLICATIONS OF THE ENGINEERING EXPERIMENT STATION

- Bulletin No. 1.** Tests of Reinforced Concrete Beams, by Arthur N. Talbot. 1904. *None available.*
- Circular No. 1.** High-Speed Tool Steels, by L. P. Breckenridge. 1905. *None available.*
- Bulletin No. 2.** Tests of High-Speed Tool Steels on Cast Iron, by L. P. Breckenridge and Henry B. Dirks. 1905. *None available.*
- Circular No. 2.** Drainage of Earth Roads, by Ira O. Baker. 1906. *None available.*
- Circular No. 3.** Fuel Tests with Illinois Coal (Compiled from tests made by the Technologic Branch of the U. S. G. S., at the St. Louis, Mo., Fuel Testing Plant, 1904-1907), by L. P. Breckenridge and Paul Diserens. 1909. *None available.*
- Bulletin No. 3.** The Engineering Experiment Station of the University of Illinois, by L. P. Breckenridge. 1906. *None available.*
- Bulletin No. 4.** Tests of Reinforced Concrete Beams, Series of 1905, by Arthur N. Talbot. 1906. *Forty-five cents.*
- Bulletin No. 5.** Resistance of Tubes to Collapse, by Albert P. Carman and M. L. Carr. 1906. *None available.*
- Bulletin No. 6.** Holding Power of Railroad Spikes, by Roy I. Webber. 1906. *None available.*
- Bulletin No. 7.** Fuel Tests with Illinois Coals, by L. P. Breckenridge, S. W. Parr, and Henry B. Dirks. 1906. *None available.*
- Bulletin No. 8.** Tests of Concrete: I, Shear; II, Bond, by Arthur N. Talbot. 1906. *None available.*
- Bulletin No. 9.** An Extension of the Dewey Decimal System of Classification Applied to the Engineering Industries, by L. P. Breckenridge and G. A. Goodenough. 1906. Revised Edition 1912. *Fifty cents.*
- Bulletin No. 10.** Tests of Concrete and Reinforced Concrete Columns. Series of 1906, by Arthur N. Talbot. 1907. *None available.*
- Bulletin No. 11.** The Effect of Scale on the Transmission of Heat Through Locomotive Boiler Tubes, by Edward C. Schmidt and John M. Snodgrass. 1907. *None available.*
- Bulletin No. 12.** Tests of Reinforced Concrete T-Beams, Series of 1906, by Arthur N. Talbot. 1907. *None available.*
- Bulletin No. 13.** An Extension of the Dewey Decimal System of Classification Applied to Architecture and Building, by N. Clifford Ricker. 1907. *None available.*
- Bulletin No. 14.** Tests of Reinforced Concrete Beams, Series of 1906, by Arthur N. Talbot. 1907. *None available.*
- Bulletin No. 15.** How to Burn Illinois Coal Without Smoke, by L. P. Breckenridge. 1908. *Twenty-five cents.*
- Bulletin No. 16.** A Study of Roof Trusses, by N. Clifford Ricker. 1908. *Fifteen cents.*
- Bulletin No. 17.** The Weathering of Coal, by S. W. Parr, N. D. Hamilton, and W. F. Wheeler. 1908. *None available.*
- Bulletin No. 18.** The Strength of Chain Links, by G. A. Goodenough and L. E. Moore. 1908. *Forty cents.*
- Bulletin No. 19.** Comparative Tests of Carbon, Metallized Carbon and Tantalum Filament Lamps, by T. H. Amrine. 1908. *None available.*
- Bulletin No. 20.** Tests of Concrete and Reinforced Concrete Columns, Series of 1907, by Arthur N. Talbot. 1908. *None available.*
- Bulletin No. 21.** Tests of a Liquid Air Plant, by C. S. Hudson and C. M. Garland. 1908. *Fifteen cents.*
- Bulletin No. 22.** Tests of Cast-Iron and Reinforced Concrete Culvert Pipe, by Arthur N. Talbot. 1908. *None available.*
- Bulletin No. 23.** Voids, Settlement, and Weight of Crushed Stone, by Ira O. Baker. 1908. *Fifteen cents.*
- *Bulletin No. 24.** The Modification of Illinois Coal by Low Temperature Distillation, by S. W. Parr and C. K. Francis. 1908. *Thirty cents.*
- Bulletin No. 25.** Lighting Country Homes by Private Electric Plants, by T. H. Amrine. 1908. *Twenty cents.*
- Bulletin No. 26.** High Steam Pressures in Locomotive Service. A Review of a Report to the Carnegie Institution of Washington, by W. F. M. Goss. 1908. *Twenty-five cents.*
- Bulletin No. 27.** Tests of Brick Columns and Terra Cotta Block Columns, by Arthur N. Talbot and Duff A. Abrams. 1909. *Twenty-five cents.*
- Bulletin No. 28.** A Test of Three Large Reinforced Concrete Beams, by Arthur N. Talbot. 1909. *Fifteen cents.*
- Bulletin No. 29.** Tests of Reinforced Concrete Beams: Resistance to Web Stresses, Series of 1907 and 1908, by Arthur N. Talbot. 1909. *Forty-five cents.*
- *Bulletin No. 30.** On the Rate of Formation of Carbon Monoxide in Gas Producers, by J. K. Clement, L. H. Adams, and C. N. Haskins. 1909. *Twenty-five cents.*
- *Bulletin No. 31.** Fuel Tests with House-heating Boilers, by J. M. Snodgrass. 1909. *Fifty-five cents.*
- Bulletin No. 32.** The Occluded Gases in Coal, by S. W. Parr and Perry Barker. 1909. *Fifteen cents.*
- Bulletin No. 33.** Tests of Tungsten Lamps, by T. H. Amrine and A. Guell. 1909. *Twenty cents.*
- *Bulletin No. 34.** Tests of Two Types of Tile-Roof Furnaces under a Water-Tube Boiler, by J. M. Snodgrass. 1909. *Fifteen cents.*
- Bulletin No. 35.** A Study of Base and Bearing Plates for Columns and Beams, by N. Clifford Ricker. 1909. *Twenty cents.*
- Bulletin No. 36.** The Thermal Conductivity of Fire-Clay at High Temperatures, by J. K. Clement and W. L. Egly. 1909. *Twenty cents.*
- Bulletin No. 37.** Unit Coal and the Composition of Coal Ash, by S. W. Parr and W. F. Wheeler. 1909. *Thirty-five cents.*
- *Bulletin No. 38.** The Weathering of Coal, by S. W. Parr and W. F. Wheeler. 1909. *Twenty-five cents.*
- *Bulletin No. 39.** Tests of Washed Grades of Illinois Coal, by C. S. McGovney. 1909. *Seventy-five cents.*
- Bulletin No. 40.** A Study in Heat Transmission, by J. K. Clement and C. M. Garland. 1910. *Ten cents.*
- *Bulletin No. 41.** Tests of Timber Beams, by Arthur N. Talbot. 1910. *Twenty cents.*
- *Bulletin No. 42.** The Effect of Keyways on the Strength of Shafts, by Herbert F. Moore. 1910. *Ten cents.*

*A limited number of copies of those bulletins which are starred are available for free distribution.

PUBLICATIONS OF THE ENGINEERING EXPERIMENT STATION

- Bulletin No. 43.* Freight Train Resistance, by Edward C. Schmidt. 1910. *Seventy-five cents.*
- Bulletin No. 44.* An Investigation of Built-up Columns Under Load, by Arthur N. Talbot and Herbert F. Moore. 1911. *Thirty-five cents.*
- *Bulletin No. 45.* The Strength of Oxyacetylene Welds in Steel, by Herbert L. Whittemore. 1911. *Thirty-five cents.*
- *Bulletin No. 46.* The Spontaneous Combustion of Coal, by S. W. Parr and F. W. Kressmann. 1911. *Forty-five cents.*
- *Bulletin No. 47.* Magnetic Properties of Heusler Alloys, by Edward B. Stephenson. 1911. *Twenty-five cents.*
- *Bulletin No. 48.* Resistance to Flow Through Locomotive Water Columns, by Arthur N. Talbot and Melvin L. Enger. 1911. *Forty cents.*
- *Bulletin No. 49.* Tests of Nickel-Steel Riveted Joints, by Arthur N. Talbot and Herbert F. Moore. 1911. *Thirty cents.*
- *Bulletin No. 50.* Tests of a Suction Gas Producer, by C. M. Garland and A. P. Kratz. 1912. *Fifty cents.*
- Bulletin No. 51.* Street Lighting by J. M. Bryant and H. G. Hake. 1912. *Thirty-five cents.*
- *Bulletin No. 52.* An Investigation of the Strength of Rolled Zinc, by Herbert F. Moore. 1912. *Fifteen cents.*
- *Bulletin No. 53.* Inductance of Coils, by Morgan Brooks and H. M. Turner. 1912. *Forty cents.*
- *Bulletin No. 54.* Mechanical Stresses in Transmission Lines, by A. Guell. 1912. *Twenty cents.*
- *Bulletin No. 55.* Starting Currents of Transformers, with Special Reference to Transformers with Silicon Steel Cores, by Trygve D. Yensen. 1912. *Twenty cents.*
- *Bulletin No. 56.* Tests of Columns: An Investigation of the Value of Concrete as Reinforcement for Structural Steel Columns, by Arthur N. Talbot and Arthur R. Lord. 1912. *Twenty-five cents.*
- *Bulletin No. 57.* Superheated Steam in Locomotive Service. A Review of Publication No. 127 of the Carnegie Institution of Washington, by W. F. M. Goss. 1912. *Forty cents.*
- *Bulletin No. 58.* A New Analysis of the Cylinder Performance of Reciprocating Engines, by J. Paul Clayton. 1912. *Sixty cents.*
- *Bulletin No. 59.* The Effect of Cold Weather Upon Train Resistance and Tonnage Rating, by Edward C. Schmidt and F. W. Marquis. 1912. *Twenty cents.*
- *Bulletin No. 60.* The Coking of Coal at Low Temperatures, with a Preliminary Study of the By-Products, by S. W. Parr and H. L. Olin. 1912. *Twenty-five cents.*
- *Bulletin No. 61.* Characteristics and Limitations of the Series Transformer, by A. R. Anderson and H. R. Woodrow. 1913. *Twenty-five cents.*
- Bulletin No. 62.* The Electron Theory of Magnetism, by Elmer H. Williams. 1913. *Thirty-five cents.*
- Bulletin No. 63.* Entropy-Temperature and Transmission Diagrams for Air, by C. R. Richards. 1913. *Twenty-five cents.*
- *Bulletin No. 64.* Tests of Reinforced Concrete Buildings Under Load, by Arthur N. Talbot and Willis A. Slater. 1913. *Fifty cents.*
- *Bulletin No. 65.* The Steam Consumption of Locomotive Engines from the Indicator Diagrams, by J. Paul Clayton. 1913. *Forty cents.*
- Bulletin No. 66.* The Properties of Saturated and Superheated Ammonia Vapor, by G. A. Goodenough and William Earl Mosher. 1913. *Fifty cents.*
- Bulletin No. 67.* Reinforced Concrete Wall Footings and Column Footings, by Arthur N. Talbot. 1913. *Fifty cents.*
- *Bulletin No. 68.* Strength of I-Beams in Flexure, by Herbert F. Moore. 1913. *Twenty cents.*
- *Bulletin No. 69.* Coal Washing in Illinois, by F. C. Lincoln. 1913. *Fifty cents.*
- Bulletin No. 70.* The Mortar-Making Qualities of Illinois Sands, by C. C. Wiley. 1913. *Twenty cents.*
- Bulletin No. 71.* Tests of Bond between Concrete and Steel, by Duff A. Abrams. 1914. *One dollar.*
- *Bulletin No. 72.* Magnetic and Other Properties of Electrolytic Iron Melted in Vacuo, by Trygve D. Yensen. 1914. *Forty cents.*
- *Bulletin No. 73.* Acoustics of Auditoriums, by F. R. Watson. 1914. *Twenty cents.*
- *Bulletin No. 74.* The Tractive Resistance of a 28-Ton Electric Car, by Harold H. Dunn. 1914. *Twenty-five cents.*
- Bulletin No. 75.* Thermal Properties of Steam, by G. A. Goodenough. 1914. *Thirty-five cents.*
- *Bulletin No. 76.* The Analysis of Coal with Phenol as a Solvent, by S. W. Parr and H. F. Hadley. 1914. *Twenty-five cents.*
- *Bulletin No. 77.* The Effect of Boron upon the Magnetic and Other Properties of Electrolytic Iron Melted in Vacuo, by Trygve D. Yensen. 1915. *Ten cents.*
- *Bulletin No. 78.* A Study of Boiler Losses, by A. P. Kratz. 1915. *Thirty-five cents.*
- *Bulletin No. 79.* The Coking of Coal at Low Temperatures With Special Reference to the Properties and Composition of the Products, by S. W. Parr and H. L. Olin. 1915. *Twenty-five cents.*
- *Bulletin No. 80.* Wind Stresses in the Steel Frames of Office Buildings, by W. M. Wilson and G. A. Maney. 1915. *Fifty cents.*
- *Bulletin No. 81.* Influence of Temperature on the Strength of Concrete, by A. B. McDaniel. 1915. *Fifteen cents.*
- *Bulletin No. 82.* Laboratory Tests of a Consolidation Locomotive, by E. C. Schmidt, J. M. Snodgrass, and R. B. Keller. 1915. *Sixty-five cents.*
- *Bulletin No. 83.* Magnetic and Other Properties of Iron-Silicon Alloys Melted in Vacuo, by Trygve D. Yensen. 1915. *Thirty-five cents.*
- *Bulletin No. 84.* Tests of Reinforced Concrete Flat Slab Structure, by A. N. Talbot and W. A. Slater. 1916. *Fifty cents.*
- *Bulletin No. 85.* Strength and Stiffness of Steel Under Biaxial Loading, by A. J. Becker. 1916. *Thirty-five cents.*
- *Bulletin No. 86.* The Strength of I-Beams and Girders, by H. F. Moore and W. W. Wilson. 1916. *Thirty cents.*

*A limited number of copies of those bulletins which are starred are available for free distribution.

This page is intentionally blank.

This page is intentionally blank.

THE UNIVERSITY OF ILLINOIS
THE STATE UNIVERSITY
URBANA

EDMUND J. JAMES, Ph. D., LL. D., President

THE UNIVERSITY INCLUDES THE FOLLOWING DEPARTMENTS:

The Graduate School

The College of Liberal Arts and Sciences (Ancient and Modern Languages and Literatures; History, Economics, Political Science, Sociology; Philosophy, Psychology, Education; Mathematics; Astronomy; Geology; Physics; Chemistry; Botany, Zoology, Entomology; Physiology; Art and Design)

The College of Commerce and Business Administration (General Business, Banking, Insurance, Accountancy, Railway Administration, Foreign Commerce; Courses for Commercial Teachers and Commercial and Civic Secretaries)

The College of Engineering (Architecture; Architectural, Ceramic, Civil, Electrical, Mechanical, Mining, Municipal and Sanitary, and Railway Engineering)

The College of Agriculture (Agronomy; Animal Husbandry; Dairy Husbandry; Horticulture and Landscape Gardening; Agricultural Extension; Teachers' Course; Household Science)

The College of Law (three-years' course)

The School of Education

The Course in Journalism

The Courses in Chemistry and Chemical Engineering

The School of Railway Engineering and Administration

The School of Music (four years' course)

The School of Library Science (two years' course)

The College of Medicine (in Chicago)

The College of Dentistry (in Chicago)

The School of Pharmacy (in Chicago; Ph.G. and Ph.C. courses)

The Summer Session (eight weeks)

Experiment Stations and Scientific Bureaus: U. S. Agricultural Experiment Station; Engineering Experiment Station; State Laboratory of Natural History; State Entomologist's Office; Biological Experiment Station on Illinois River; State Water Survey; State Geological Survey; Mine Rescue Station.

The library collections contain (December 1, 1915) 348,607 volumes and 83,566 pamphlets.

For catalogs and information address

THE REGISTRAR
Urbana, Illinois

